



# LASER LEVEL

## CHARACTERISTICS

- OPTICAL DISTANCE SENSOR LASER TECHNOLOGY;
- CONNECTOR M12;
- VISIBLE LASER LIGHT;
- CLASS PROTECTION 2;
- SETTING LOCKRING;
- ONE CONFIGURABLE OUTPUT SIGNAL
- 0,3...2 M
- BACKGROUND SUPPRESSION > 10...20 M;
- MEASUREMENT FREQUENCY OF 33 Hz

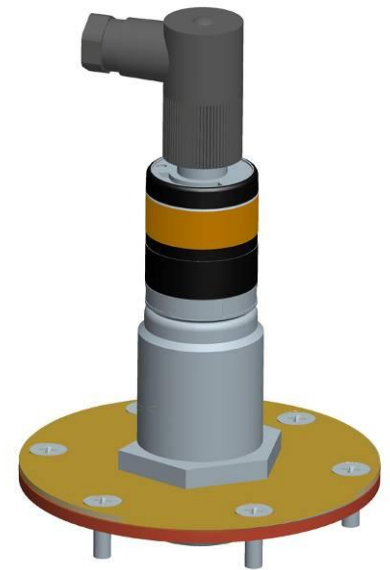
## LASER LEVEL

The *Laser level* is an optical distance sensor ideal for measuring the quantity of lubricant present in pump reservoirs.

This sensor can have a digital output that can be set to the required set point for minimum, maximum or other level settings.

The level was designed primarily for use on the SUMO and Mini-SUMO Pump system using the Dropsa standardized fixing flange.

The sensor is set by rotating the setting-ring to the desired distance. The lock ring avoids accidental changing of the setting.

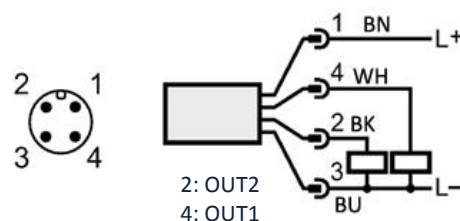


<b>COMMENTS</b>	• Operating voltage "supply class 2" according cULus.	• Caution: Laser light
	• Power <= 4,1 mW Wavelength 650 nm	• Pulse 1,3 ns
	• Avoid contact with laser light	• Do not stare into Beam
	• EN 60825-1:2007-10	• Laser class 2

## ELECTRICAL WIRING

### OUTPUTS:

During normal connection the switch provides NO and NC outputs at the set point. If connecting to an IO-Link interface the laser-sensor can operate in continuous mode giving actual grease level output.



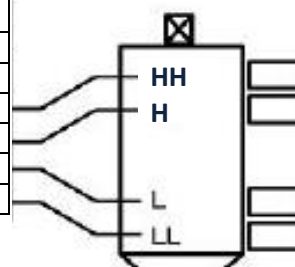
### ATTENTION:

- Do not stare into beam
- Avoid exposure
- Unplug connector to extinguish laser beam

### SUPPLY CLASS 2 - 10 - 30 V DC

- 4: OUT1= normally open (grease level > Level set point) IO-Link
- 2: OUT2= normally closed (grease level > Level set point)

RESERVOIR MODEL			
10 Kg	30 Kg	50 Kg	100 Kg
SETUP POINT cm			
15	15	15	15
18	18	18	18
23	42	43	78
26	45	46	81



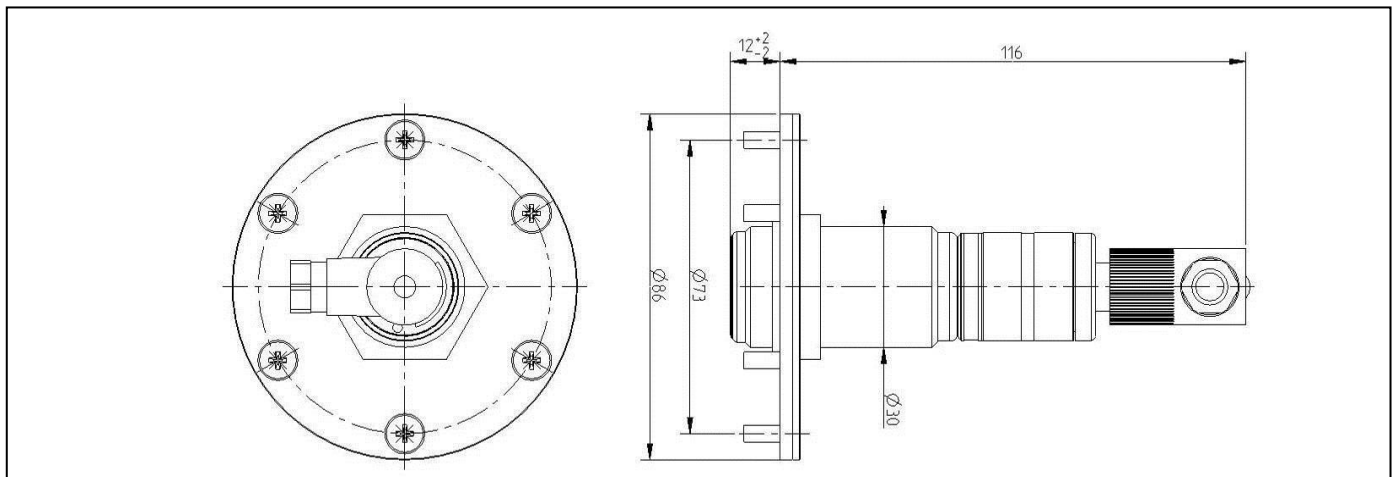
## APPLICATIONS

- LEVEL SENSOR FOR SUMO AND MINI-SUMO LUBRICATION PUMP;
- LEVEL SENSOR IN GREASE PUMP RESERVOIR.

## TECHNICAL CHARACTERISTICS

TECHNICAL SPECIFICATIONS		
Electrical design	DC PNP	
Output function	2 switching outputs normally open / closed complementary	
Light spot diameter [mm]	< 5 (Flowrate 2 m)	
Measuring frequency [Hz]	33	
Operating voltage [V]	10...30 DC	
Power absorption [mW]	75: (24 V)	
Current capacity [mA]	2 x 200	
Protection against short circuits	Pulse	
Protection against reverse polarity	Yes	
Overload resistance	Yes	
Norm. duration [h]	50000	
LED Indicator	Switching status	Yellow LED
	Operation	Green LED
Ambient temperature [°C]	-25...60	
Grade/protection class	IP 67/IP 65	
Housing materials	INOX, PMMA	
CEM	EN 60947-5-2	
Connection	Connector M12	

## DIMENSIONS (NOT TO SCALE)



## ORDERING INFORMATION

DESCRIPTION	CODES
LASER KIT	0295131

ACCESSORIE	CODES
M12 female connector + CABLE L 5 mt	0039815
2 m cable, M12 female connector	0039168
2 m cable, 90°- M12 female connector	0039830
5 m cable, 90°- M12 female connector	0398115

Info Distributor: