

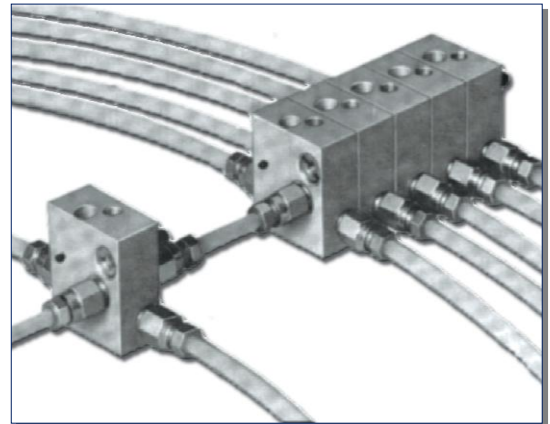
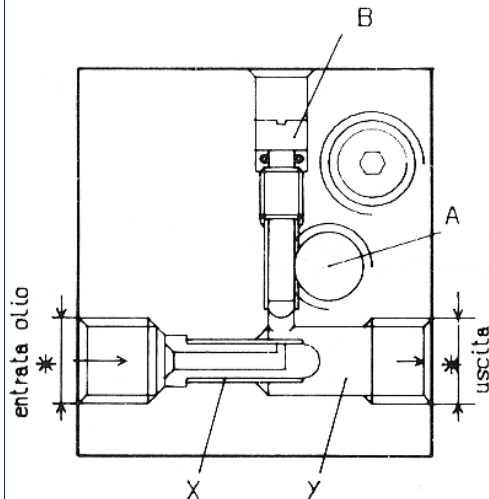
CHARACTERISTICS

- **LOW COST**
- **MAX OIL VISCOSITY:**
230 CST A 40°C
- **MAX DELIVERY PER STROKE:** 15 CC
- **MAX DELIVERY FOR CONTINUOUS OPERATION:**
0.5 L/MIN
- **MIN PRESSURE:** 2 BAR
- **MAX PRESSURE:**
100 BAR

MIXING VALVE

This is a very simple inexpensive unit suitable for many spray lubrication problems.

Only the large oil particles mix with air, eliminating the problems of microfog.



OPERATION:

The lubricant flows through the fitting X and mixes with the air in chamber Y.

The air flow from hole A is controlled by screw B.

To achieve a good mixture the delivery tube must have a minimum length of 1 metre.

The mixing element can be used singly or in groups, each metering element having one hole for wall fixture and a second hole for connecting to another element.

The air consumptions (based on the opening of the adjustment screw and the pressure) are indicated in the graph on page 4.

TECHNICAL INFORMATION

Technical Information	
Max viscosity	230 cSt a 40°C
Max delivery per stroke	15 cc
Max delivery for continuous operation	0.5 L/min
Min pressure	2 bar
Max pressure	100 bar

ORDERING INFORMATION

Description	Part number
Mixing valve 1/8 BSP	1132250
Mixing valve 1/8 NPT	1132260

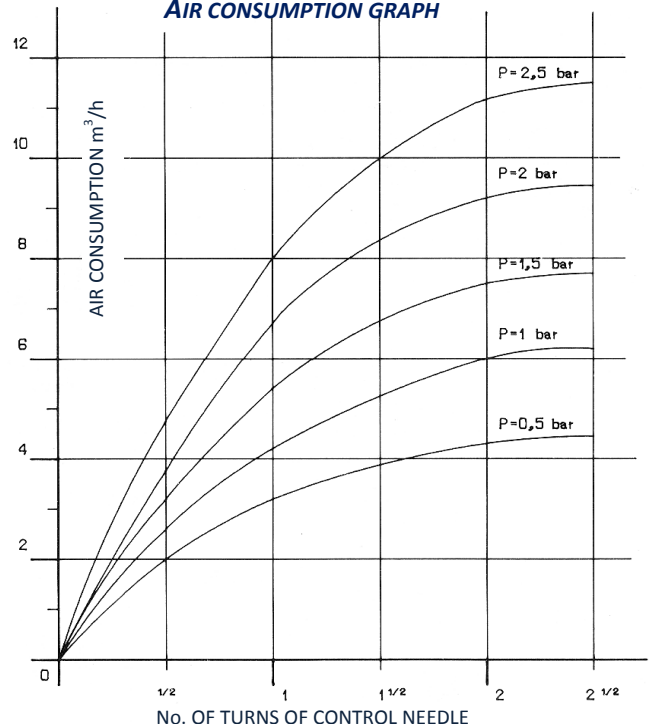
SPARE PARTS

Pos.	Description	Part number
1	seal	0018802
2	Needle	1132253
3	Valve body	1132251
4	Tube	1132254
5	Nozzle	1132252
6	Cyl. Head screw	0014085
7	Bush	1132255
8	Gasket	0058382
9	Pin	0016805

APPLICATIONS

- **PROGRESSIVE METERING ELEMENTS**
- **DUAL LINE WITH ADJUSTABLE FLOW RATE**

AIR CONSUMPTION GRAPH



CONTACTS

www.dropsa.com

sales@dropsa.com

ITALIA

Dropsa SpA
t. (+39) 02-250791
f. (+39) 02-25079767

U.K.

Dropsa (UK) Ltd
t. (+44) 01784-431177
f. (+44) 01784-438598

GERMANY

Dropsa GmbH
t. (+49) 0211-394-011
f. (+49) 0211-394-013

FRANCE

Dropsa Ame
t. (+33) 01-3993-0033
f. (+33) 01-3986-2636

U.S.A.

Dropsa Corporation
t. (+1) 586-566-1540
f. (+1) 586-566-1541

AUSTRALIA

Dropsa Australia Ltd.
t. (+61) 02-9938-6644
f. (+61) 02-9938-6611

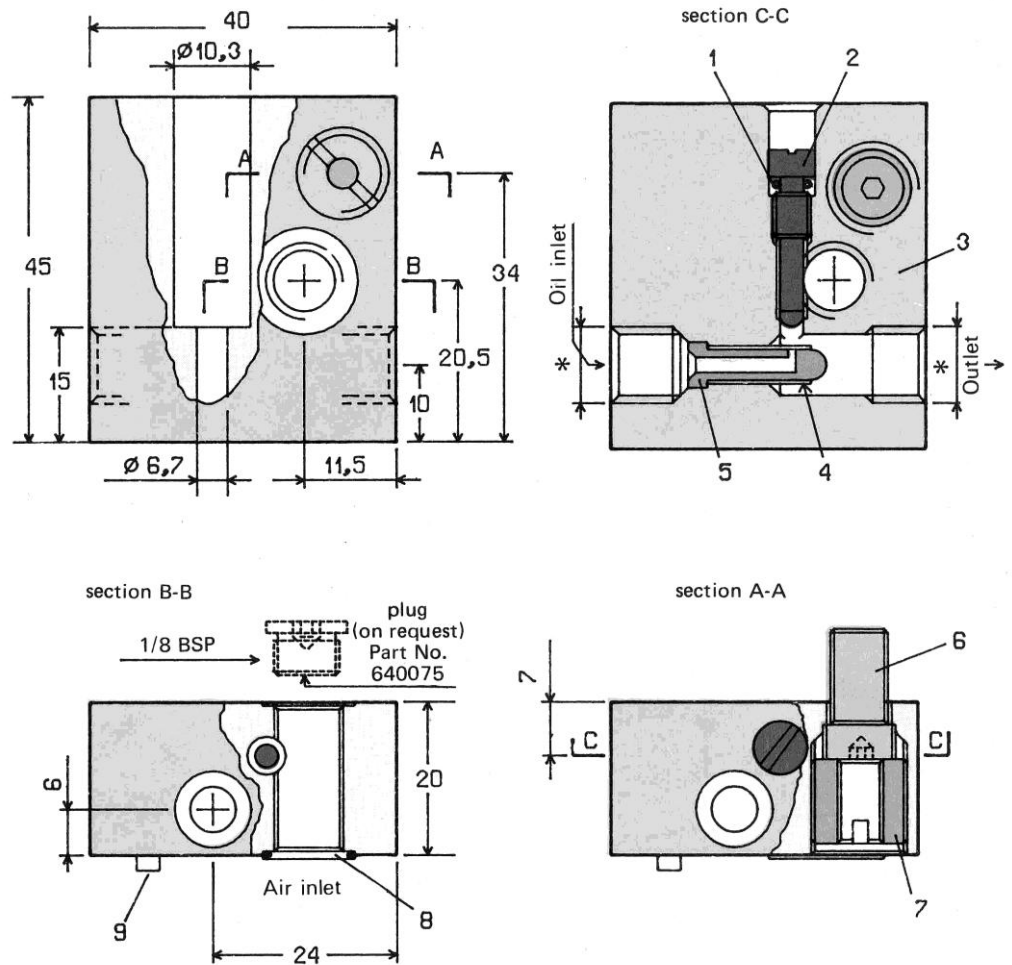
BRAZIL

Dropsa Brasil Ind.e
Com.Ltda
t. (+55) 011-563-10007
f. (+55) 011-563-19408

CHINA

Dropsa Lubrication Systems
(Shanghai) Co., Ltd
t. (+86) 021 67740275
f. (+86) 021 67740205

DIMENSIONS



EXAMPLES OF USE:

A number of feed possibilities:

- fig. 1 with continuous or intermittent flow pump
- fig. 2 feed through progressive metering elements
- fig. 3 mixing valve connected to the output of a double line metering element with adjustable flow.
- fig. 4 valves fed by a multiple line lubricator.

The air supply can be connected in parallel to the pump in cases of intermittent lubrication.

