

## CHARACTERISTICS

- MAX. CYCLES PER MIN: 600
- Small dimensions
- SUCTION Ø 8-10
- DELIVERY Ø 8-6-10
- FLOW RATE 2.6 CM<sup>3</sup> PER CYCLE

## SERIES LT AND PS CAM-DRIVEN PISTON PUMP

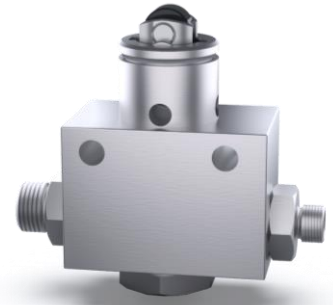
The cam-driven piston pump is available in two versions, PF with a flange and PS without a flange.

Execution with lateral suction and lateral delivery with a normal roller.

Equipped with an internal bypass that recirculates the lubricant when the line pressure exceeds 2 atm.

Flow rate of 2.6 cm<sup>3</sup> per cycle with a maximum tappet stroke of 10 mm.

The pump housings are made of an aluminium alloy and the plunger is tempered and modified steel.



### GENERAL TECHNICAL CHARACTERISTICS

<b>Working pressure</b>	5 bar
<b>Nominal cycle flow rate</b>	2.6 cc
<b>Maximum number of cycles per minute</b>	600
<b>Oil viscosity</b>	Min. 15 cSt max. 220 cSt
<b>Operating temperature</b>	+5 ÷ +60

### APPLICATION EXAMPLE

The rotary vane pump is a valid alternative to the plunger pump for oil lubrication systems for chains and machinery elements.

The lubrication system consists of a 2 or 3L reservoir with a suction filter, a pump, distributors and valves, brushes or nozzles installed near the points to be lubricated.

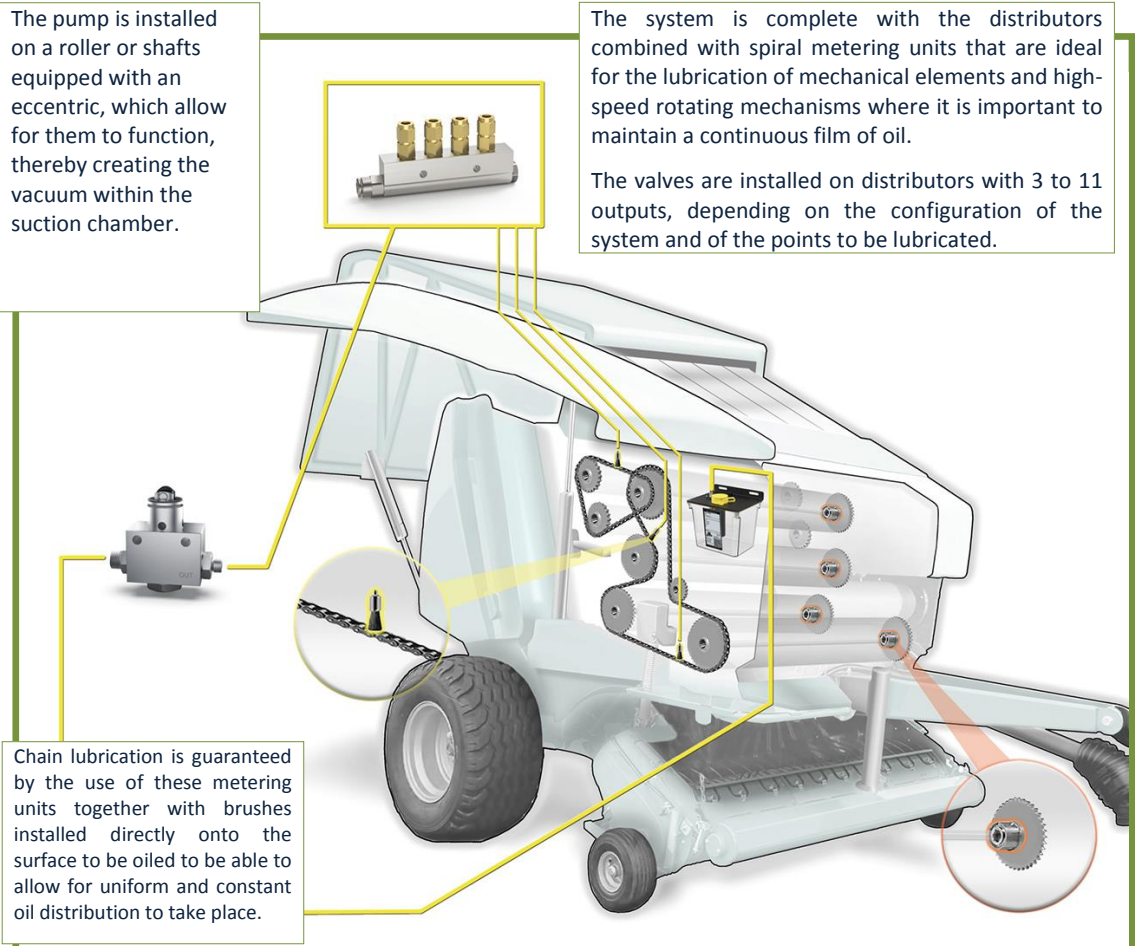
The pump is installed on a roller or shafts equipped with an eccentric, which allow for them to function, thereby creating the vacuum within the suction chamber.

The system is complete with the distributors combined with spiral metering units that are ideal for the lubrication of mechanical elements and high-speed rotating mechanisms where it is important to maintain a continuous film of oil.

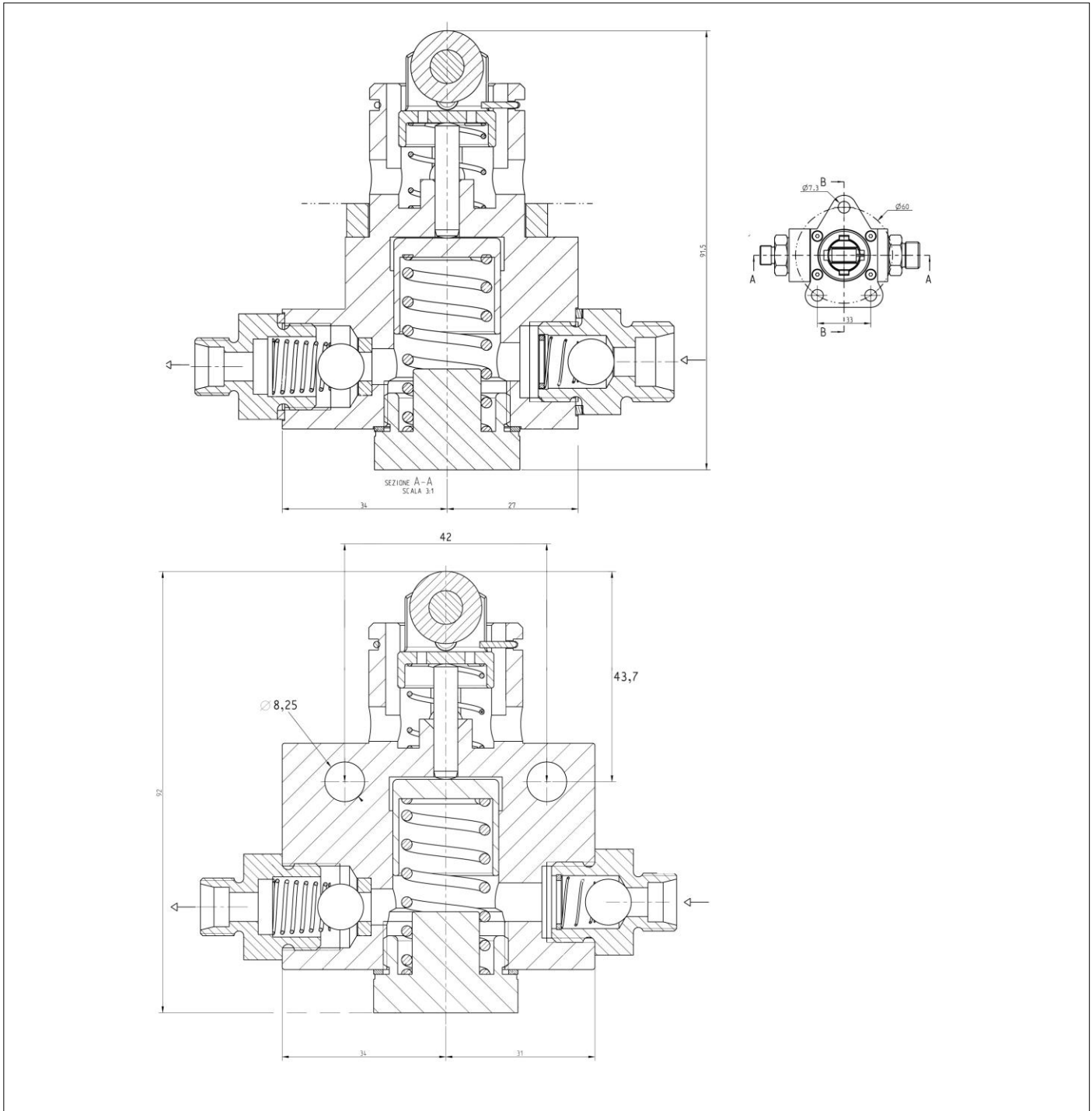
The valves are installed on distributors with 3 to 11 outputs, depending on the configuration of the system and of the points to be lubricated.

## APPLICATIONS

- AGRICULTURAL MACHINERY
- FIXED-CHAMBER BALERS
- VARIABLE-CHAMBER BALERS
- COMBINE HARVESTERS
- LUBRICATION SYSTEMS FOR CHAINS OR LOW-PRESSURE REDUCERS AND BY MEANS OF CAM ACTUATION



## DIMENSIONS (DRAWING NOT TO SCALE)



## ORDER INFORMATION

DESCRIPTION	$\varnothing$ SUCTION	$\varnothing$ DELIVERY	PART NUMBER
WITHOUT FLANGE	8	8	LT-PS22-B21-8-8
	10	8	LT-PS22-B21-10-8
	8	6	LT-PS22-B21-8-6
	10	6	LT-PS22-B21-10-6
WITH FLANGE	10	8	LT-PF22-B21-10-8
	10	10	LT-PF22-B21-10-10

Distributor info: