



CHARACTERISTICS

- **Flow rate:**
400 bar (5800 psi)
- **Working cycles:**
max 100 per minutes
- **Temperature:**
from -30°C to +80 °C
- **Lubricants:**
265 ASTM (NLGI 2)

SERIES APF6

DESCRIPTION:

The feeder body is made of special anti-friction steel. Pistons are made of tempered steel. Bores and pistons are lapped to provide superior sealing. These feeders do not employ indicator turrets (see AP6 series) and are used for special applications. The body has a galvanized finish and features an adaptor for single or double outlet conversion. They are set by the factory at 1,5 cc./stroke(.091 cu. in./ stroke) unless otherwise requested..

SPECIFICATION:

- Temperature range:** -30 to +80°C.
- Max. pressure (inlet):** 400 bar (5800 psi.)
- Cycles:** 100/min.
- Min. Viscosity:** 100 cSt (462 SSU)
- Grease Max.:** 265 ASTM (NLGI 2)*
- Connections:**
- Inlet:** 1/4"
- Outlet:** 1/4"

(*) For different type of grease please contact your supplier



outlet feeders are used the discharge per complete cycle = 3 cc./stroke (.183 cu.in. / stroke).

Dimensions:

Mounting: (Refer to Fig. 2.)

Aluminium bushings (Part. No. 3008107) are supplied for mounting on uneven surfaces to prevent distortion or damage due to overtightening..

ORDERING INFORMATION

Thread	Part.No.	Weight		No. Outlets
		Kg.	Lbs.	
Standard BSP	622180	0,820	1.80	1-2
	623180	1,230	2.71	2-4
	624180	1,560	3.44	3-6
	625180	1,920	4.23	4-8
Din 3852 X BSP	622190	0,820	1.80	1-2
	623190	1,230	2.71	2-4
	624190	1,560	3.44	3-6
	625190	1,920	4.23	4-8
NPTF	622140	0,820	1.80	1-2
	623140	1,230	2.71	2-4
	624140	1,560	3.44	3-6
	625140	1,920	4.23	4-8

INSTALLATION/OPERATION:

Function: (Refer to Figs. 1 and 3.)

In installations where backpressure is detected at the outlets of the feeder blocks, a check- valve must be fitted to each outlet. The feeder discharge is controlled by a servo-piston (A) and metering piston (B) and can be arranged to provide a single or double outlet. Fig. D-E= 2 separate outlets Fig. F-G =1 outlet. Feeders are normally supplied with double outlets unless otherwise specified. Retrospective conversion can be undertaken by fitting adaptor Y (Part No. 622076) for single outlet and X (Part No. 622077) for double outlet. When single

FUNCTION

2 OUTLETS

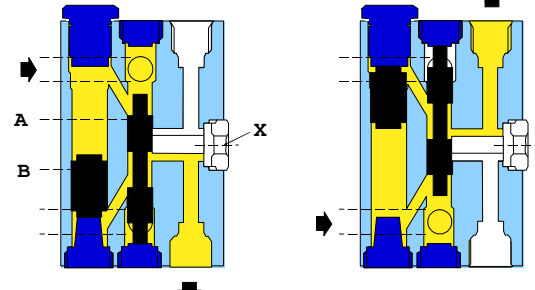


FIG. D.

FIG. E.

1 OUTLET

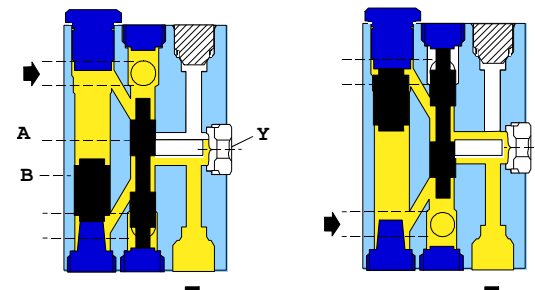
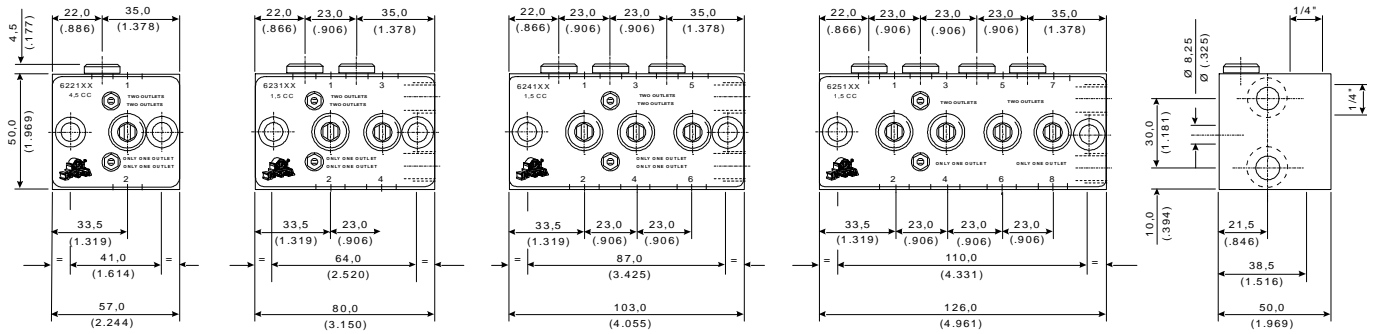


FIG. F.

FIG. G.

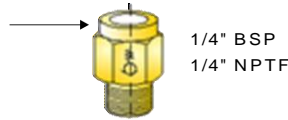
APPLICATIONS

- Machine tools
- Medium dimension presses
- Packaging machines
- Plastic injection presses
- Reducers



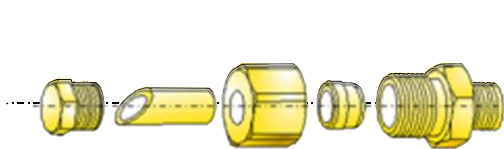
Dropsa Standard feeder blocks are normally supplied with outlets having a conical seating for $\varnothing 8$ mm. (5/16") tube. This is simple and cost effective as no fitting is required.

If required a check-valve Part No. 92313 BSP or Part No. 92340 NPTF can be fitted at the outlet. Order separately.

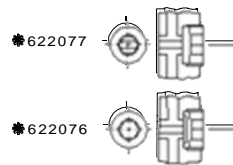
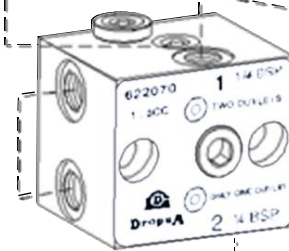


DROPSA STANDARD				
Reducer	Cone	Nut	\varnothing Tube	Plug
671038	93006	92014	$\varnothing 6$	91011
671038	93008	92053	$\varnothing 8$	91011

INLET 1/4"



DROPSA STANDARD DIN 3852 BSP \varnothing mm.				
Plug	Tube \varnothing	Nut	Ring	Fitting
926001	$\varnothing 8$	91406	91601	92269
	$\varnothing 10$	91411	91607	92240
	$\varnothing 12$	91416	91612	92241
NPTF DRY SEAL \varnothing INCHES				
850281	$\varnothing 5/16$	850202	850222	850255
	$\varnothing 3/8$	850203	850223	850257
	$\varnothing 1/2$	850204	850224	850259

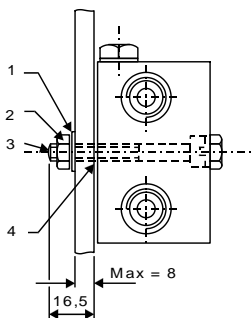


OUTLET 1/4"

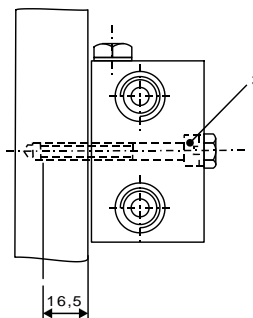
DIN 3852 BSP \varnothing mm				
Fitting	Ring	Nut	\varnothing Tube	Plug
91952	91590	91396	$\varnothing 6$	622167
91959	91596	91401	$\varnothing 8$	
91966	91601	91406	$\varnothing 10$	
NPTF DRY SEAL \varnothing INCHES				
850250	850220	850200	$\varnothing 1/4$	850281
850252	850221	850201	$\varnothing 5/16$	
850254	850222	850202	$\varnothing 3/8$	

- The double outlet adaptor (622077) is identifiable by two parallel line markings in the centre; the single outlet adaptor (622076) has a circular marking only.

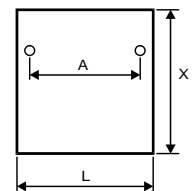
The fixing parts which are indicated thus * are to be ordered separately.



Pos.	Part No.	Qty.	Description	
• 1	16012	2	Spring washer	Metric
• 2	16406	2	Nut M8 - Hex	
• 3	12552	2	Screw M8 x 60	
4	3008107	2	Bushing	
• 1	16012	2	Spring washer	Inch
• 2	16500	2	Nut 5/16-24 UNF x 2-1/2	
• 3	12561	2	Screw 5/16-24 UNF x 2-1/2	
4	3008107	2	Bushing	



WELD PLATES FOR FEEDERS



Pos.	Part No.	Dimensions (inches)		
		A	L	X
1	111581	41 (1.614")	60 (2.362")	140 (5.511")
2	111582	64 (2.520")	85 (3.346")	140 (5.511")
3	111583	87 (3.425")	110 (4.330")	140 (5.511")
4	111584	110 (4.330")	130 (5.118")	140 (5.511")