

CHARACTERISTICS

- COMPLIANT WITH ATEX DIRECTIVE 94/9/EC
- II 2GD ck IIB+H2 T100 °C IP65
- 2 POSSIBLE RESERVOIRS: 30 OR 100 KG
- SPECIAL VERSIONS WITH A CONTROLLER
- “QUICK SWAP” MEANS NO DOWNTIME THANKS TO THE POSSIBILITY TO CHANGE THE PUMPS WITHOUT DISCONNECTING THE PIPES
- 400CM³/MIN (24 IN3) - 2x200 CM³/MIN MODULE - 400 BAR (5880 PSI)
- ELECTRO-PNEUMATIC DUAL-LINE INVERTER
- MINIMUM CAPACITIVE LEVEL AND EXTREMELY VISUALLY INTUITIVE AS A STANDARD
- LUBRICANTS: NGLI 2 MAX

APPLICATIONS

- STEEL
- MILLS
- OFF-SHORE

THE FLEXIBLE AND HIGH-PERFORMANCE SOLUTION FOR POTENTIALLY EXPLOSIVE ATMOSPHERES

MODULE WITH DUAL PUMPING

SUMO ATEX, compliant with ATEX Directive 94/9/EC, it is a SUMO variant designed to operate in potentially hazardous environments.

The **SUMO ATEX** is fully protected against the external environment and can operate without difficulty even in the most severe environmental conditions.

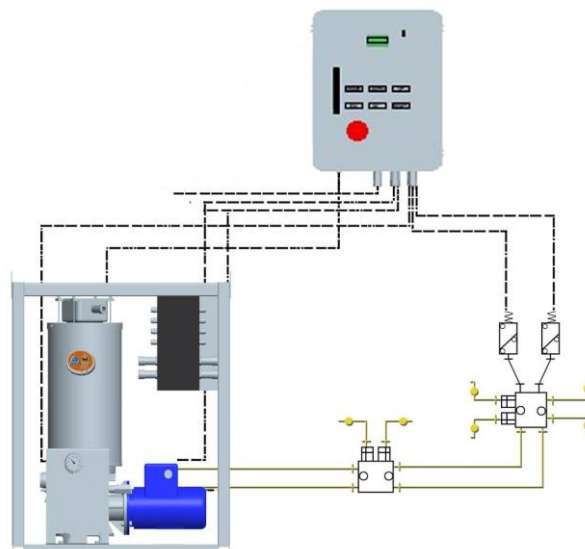
Being particularly suited for dual line systems and progressive systems, the **ATEX SUMO** is intended to supply patient systems that use grades of grease up to NLGI 2.



II 2GD ck IIB+H2 T100 °C IP65

SUMO AND VIP5 ATEX

THE DROPSA COMBINATION FOR SAFE AND PRECISE LUBRICATION



SINGLE OR DUAL LINE: IN ANY CASE, EASY TO USE

The mounting base of the outlets has pressure and return connections. The outlets are compatible with both Dropsa electric as well as pneumatic modular directional valves for reversing line flow.

QUICK SWAP SYSTEM

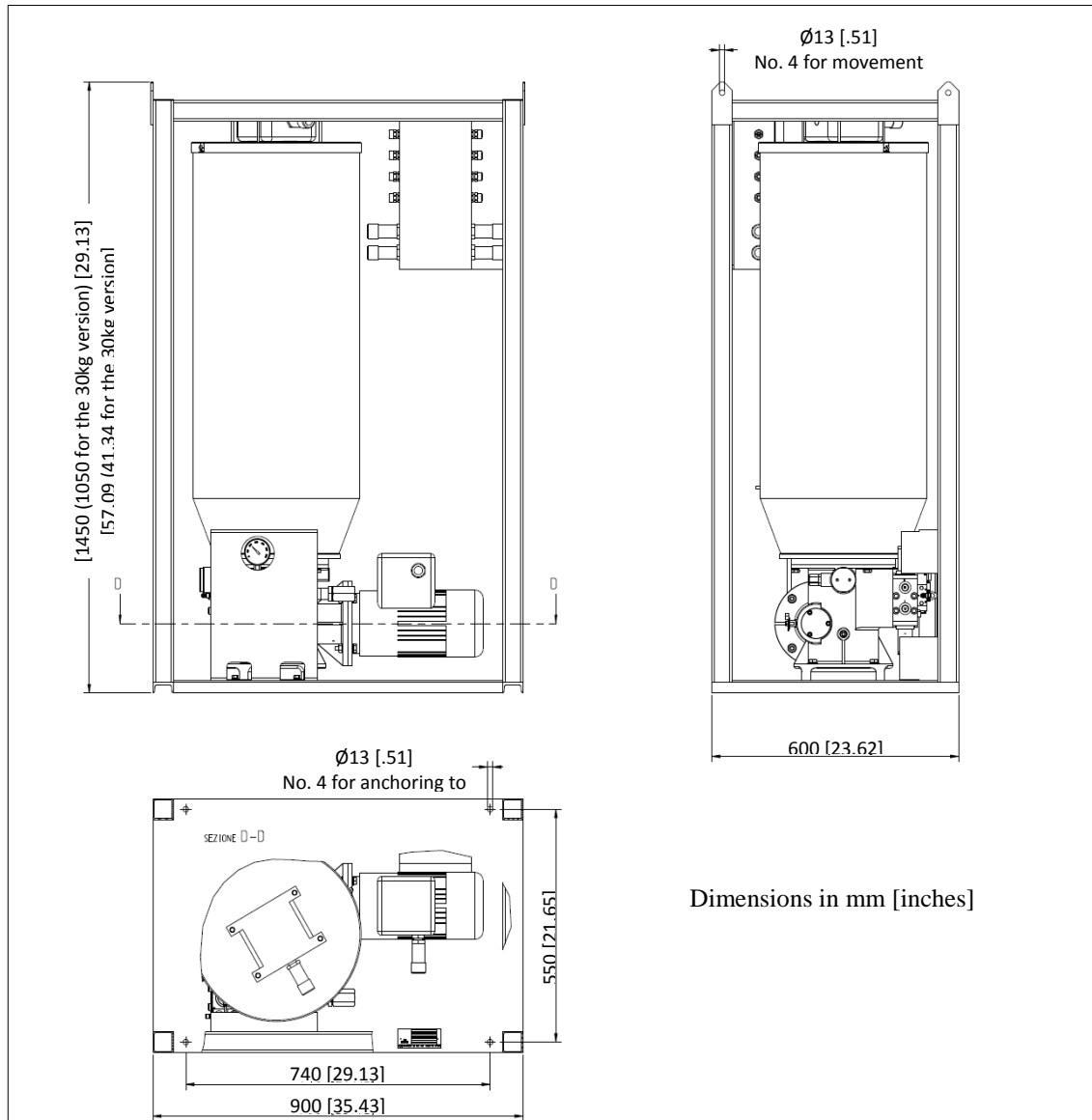
Both PUMP MODULES can be quickly replaced since they are positioned on the front of the pump. Furthermore, operations on the pipework and the connections are not necessary, thereby practically reducing the downtime to zero during maintenance.

- Checking thermal protection and reporting anomalies
- Visual control of maximum level (optionally el.)
- Separate signalling for minimum alarm / general alarm
- Continuous level monitoring 4-20 mA
- Dual-line change-over operations with electromagnetic or pneumatic actuators
- Possibility of supplying input/output circuits with respect to the control circuits
- Possibility of separating the voltage of the inverter from the other power supplies of the panel.

TECHNICAL INFORMATION

| | |
|-----------------------|---|
| Max. pressure: | 400 bar |
| Output flow rate | 400 cm ³ / min (24 cu. in/min) (2 x 200 cm ³ (12 in3) pump modules) |
| Operating temperature | from - 5° C to + 50° C (from 23° F to +122° F) |
| Motor | Three-phase Power 0.75kW Protection IP65 Class B Voltages: 230-400 Volt ± 5% 50 Hz - 240-440Volt ± 5% 60 Hz S1 continuous service |

DIMENSIONS



ORDER INFORMATION

SELECT THE SUMO ATEX STANDARD

| | PART NUMBER | OPTIONS/VARIANTS | | | |
|--------------------------------|--|--------------------------|--------------------------|--------------------------|--------------------------|
| | | MOTORS | LEVELS | INVERTER | HEATING JACKET |
| 30kg SUMO ATEX PUMP | | 2477200 | <input type="checkbox"/> | <input type="checkbox"/> | <input type="checkbox"/> |
| 100kg SUMO ATEX PUMP | | 2477201 | <input type="checkbox"/> | <input type="checkbox"/> | <input type="checkbox"/> |
| ... OR CREATE YOUR OWN VERSION | | | | | |
| MOTORS | A- MOTOR ATEX GR80 B5 KW0, 75 multi-voltage | <input type="checkbox"/> | | | |
| | B- "INGERSOLL-RAND" mod. MRV040B5D80 | <input type="checkbox"/> | | | |
| LEVELS | 0- laser Exd laser housing kit | | <input type="checkbox"/> | | |
| | 1-Exi capacitative level kit (minimum) + exd microswitch (Max) | | <input type="checkbox"/> | | |
| INVERTERS | 1- 24 V DC EExm | | | <input type="checkbox"/> | |
| | 2- 24 V AC EExm | | | <input type="checkbox"/> | |
| | 3- 110 V AC EExm | | | <input type="checkbox"/> | |
| | 4- 230 V AC EExm | | | <input type="checkbox"/> | |
| HEATING JACKET | Not present | | | | <input type="checkbox"/> |
| | 1- 100kg pump | | | | <input type="checkbox"/> |
| | 2- 30kg pump | | | | <input type="checkbox"/> |

Distributor info: