

3/2 CONTROL VALVE



CHARACTERISTICS

Lubrication line connection

- G $\frac{1}{4}$ ''; G $\frac{1}{8}$ ''

Operating pressure

- 6 bar

Ambient temperature

- 0 to 60 °C

3/2 CONTROL VALVE

Electrical 3/2 control-solenoid valve for oiled compressed air with a nominal width of 1.5 mm.

Detailed information under TA 308 23401.

General

Type	3/2 solenoid valve
Lubrication line connection	G $\frac{1}{4}$ ''; G $\frac{1}{8}$ ''
Ambient temperature	0 to 60 °C
Protection class as per EN60529	IP 54

Hydraulic system

Operating pressure	6 bar
--------------------	-------

Drive

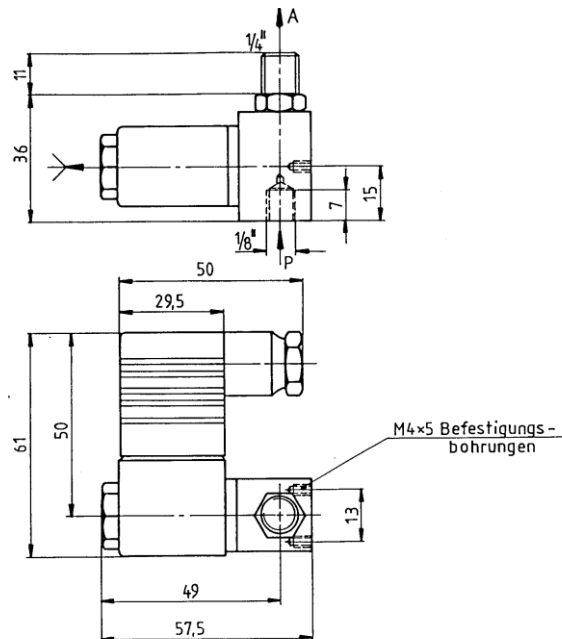
Type of drive	Electrical
Supply voltage	230 V AC
Power consumption	5 W
Connection	Right-angle connector



APPLICATIONS

- Small machines

- Single point lubrication with oil and grease



Order summary

Voltage	Order number
24V DC	300 23 403
230 V AC, 50 Hz	300 23 404

CB2358PE WK 21/20

DropsABielomatikSchmiertechnikGmbH products can be purchased at DropsABielomatikSchmiertechnik GmbH branches and authorised distributors. Write to info@bielomatik-lubrication.de

www.bielomatik-lubrication.de
www.dropsa.com

Distributor Info: