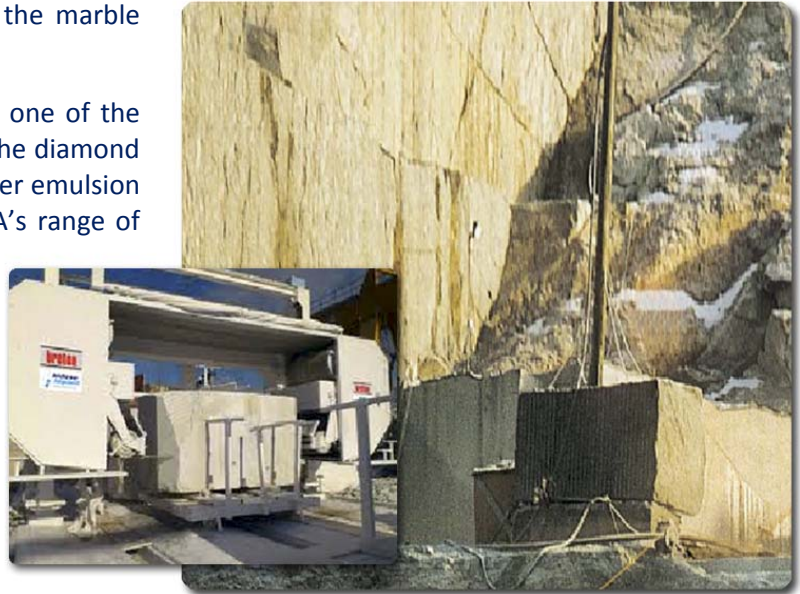


DropsA has significant experience within the marble industry.

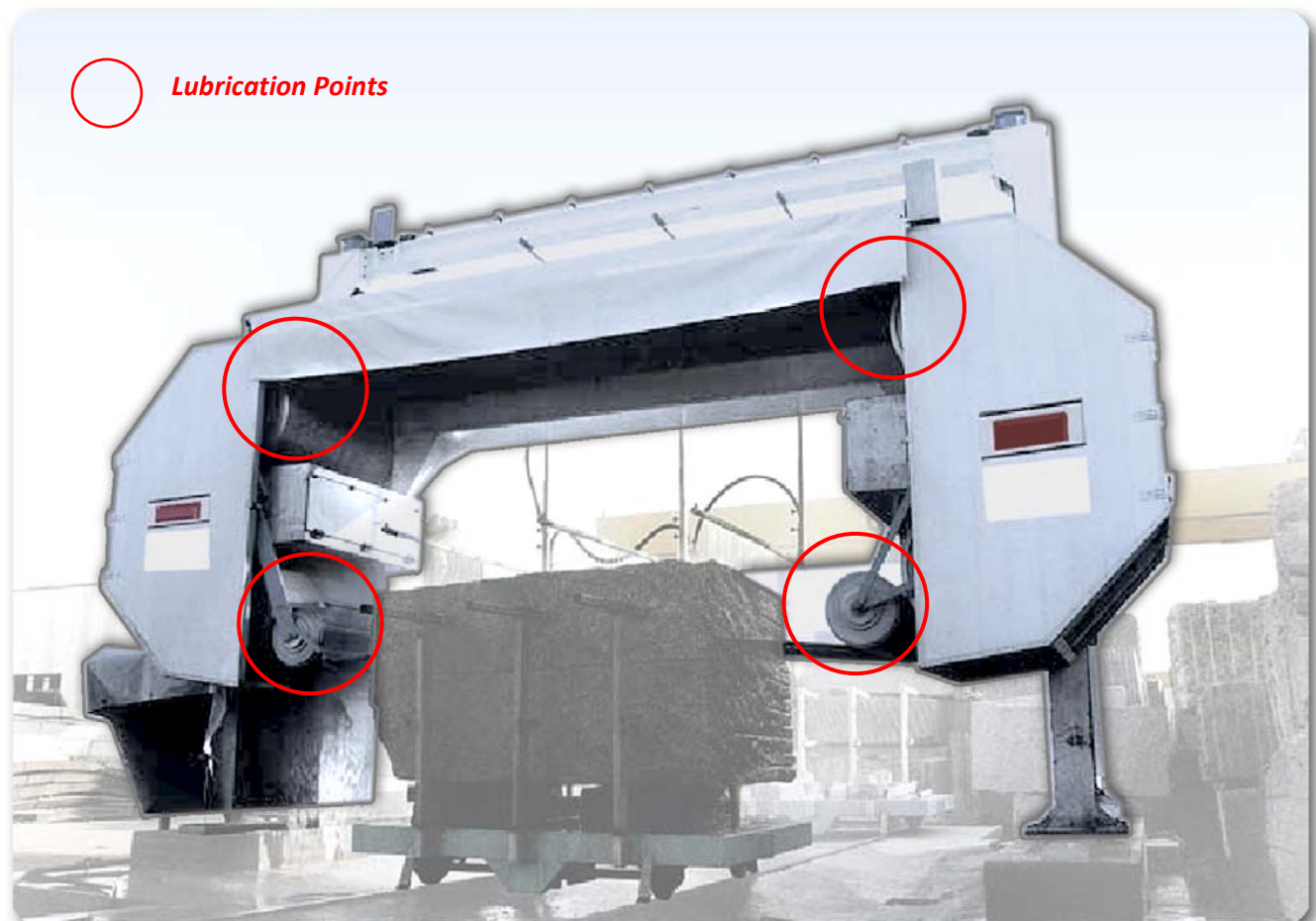
Marble is notoriously hard to saw as it is one of the hardest and most robust stone on earth. The diamond wires on the saw are lubricated with a water emulsion as it would not be possible to use DropsA's range of Air/Oil products to lubricate the saw.

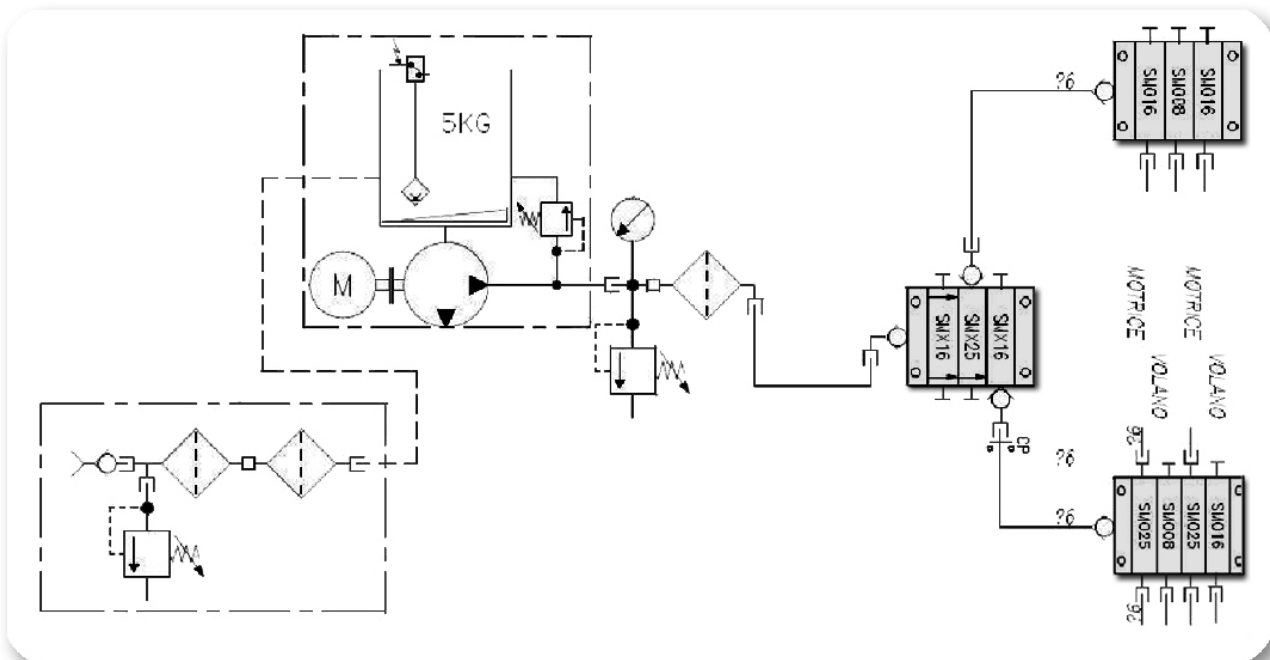
The main parts that DropsA lubricates are the wire tensioning spools. These spools maintain the diamond wires tension to ensure a precise and reliable cut of marble, stone or granite.



Analysis of the lubrication system

DropsA uses a standard Bravo and SMX grease system to lubricate these spools/rollers. The pump can be mounted internally on the machine or sometimes it needs to be external. If external it is best to use the Bravo IP69K.





DropsA proposed:

- **Bravo Pump**
The application need more than one system, but they use normally the same pump, bravo pump.
It can supply the lubrication for the idle spools and winding parts.
- **Progressive divider**
SMX flexibility helps different needing of lubrication.
With this progressive divider the system obtains good results to detect clogging or change outlet delivery.
- **Cycle Sensor**
DropsA decided to use high value sensor called Ultrasensor.
Mainly it has no movement parts that can be subjected to the mechanical failure.
- **Over pressure indicator**
Overpressure indicator detects easily where the tubing or end point is clogged.



Overpressure indicator

