



CHARACTERISTICS

- PROTECTIVE CASING
- DUAL MODULE PUMPING ELEMENT
- LASER MINIMUM LEVEL AS STANDARD
- "QUICK SWAP" MODULE:
EASY REPLACEMENT OF THE PUMPING ELEMENTS WITHOUT INTERRUPTION OF THE CONNECTIONS IN THE MAINTENANCE PHASE.
- COMPATIBLE WITH
- O2 SYSTEM
- SERIAL 26
- RESERVOIR CAPACITY:
10 KG, 30 KG, 100 KG
- FLOW RATE:
55 cc/MIN
(WITH 1 PUMPING ELEMENT)
110 cc/MIN
(WITH 2 PUMPING ELEMENT)
- OPERATING TEMPERATURE FROM -20°C TO +40 °C

APPLICATIONS

- EXPLOSION-RISK ENVIRONMENTS
- HEAVY INDUSTRY AND DIFFICULT ENVIRONMENTS
- PAPER MILLS
- STEEL PLANTS
- OFFSHORE

MINI-SUMO II ATEX ELECTRIC PUMP

THE COMPACT SOLUTION FOR EXPLOSION-RISK ENVIRONMENTS

The MINI SUMO II ATEX pump is the DropsA electric pump with a protective casing that makes it ideal for use in Zone 1 and 21, Zone 2 and 22 (ATEX) explosion-risk environments.

Ideal for the O2 Dual Line system and for the progressive system – Serial 26, the MINI SUMO II ATEX pump was designed to feed lubrication systems that use both oil and grease with NLGI 2 maximum consistency.

The version with two modules ensures a flow capacity of 110 Litres/min at a maximum pressure of 380 bar in redundancy.

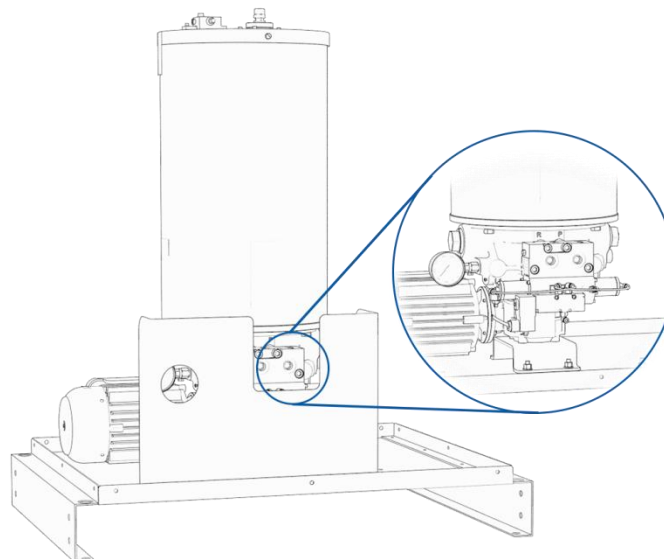
Thanks to the system with Dual pumping element, the system is always efficient because it can continue to operate even if one of the two modules were to stop.

The MINI SUMO II ATEX is generally applied to lubricate multiple points on large scale machinery in very harsh conditions, especially in explosion-risk environment.

ZERO MACHINE STOPPAGE DURING MAINTENANCE

The Quick Swap system allows both pumping elements positioned on the right side of the pump to be replaced in just a few seconds, without touching the connection and reducing the risk of contamination. Furthermore, no operations on the piping and its connections are required.

PUMPING ELEMENT FITTED WITH ELECTROMAGNETIC INVERTER (OR HYDRAULIC) FOR DUAL LINE (OPTIONAL)

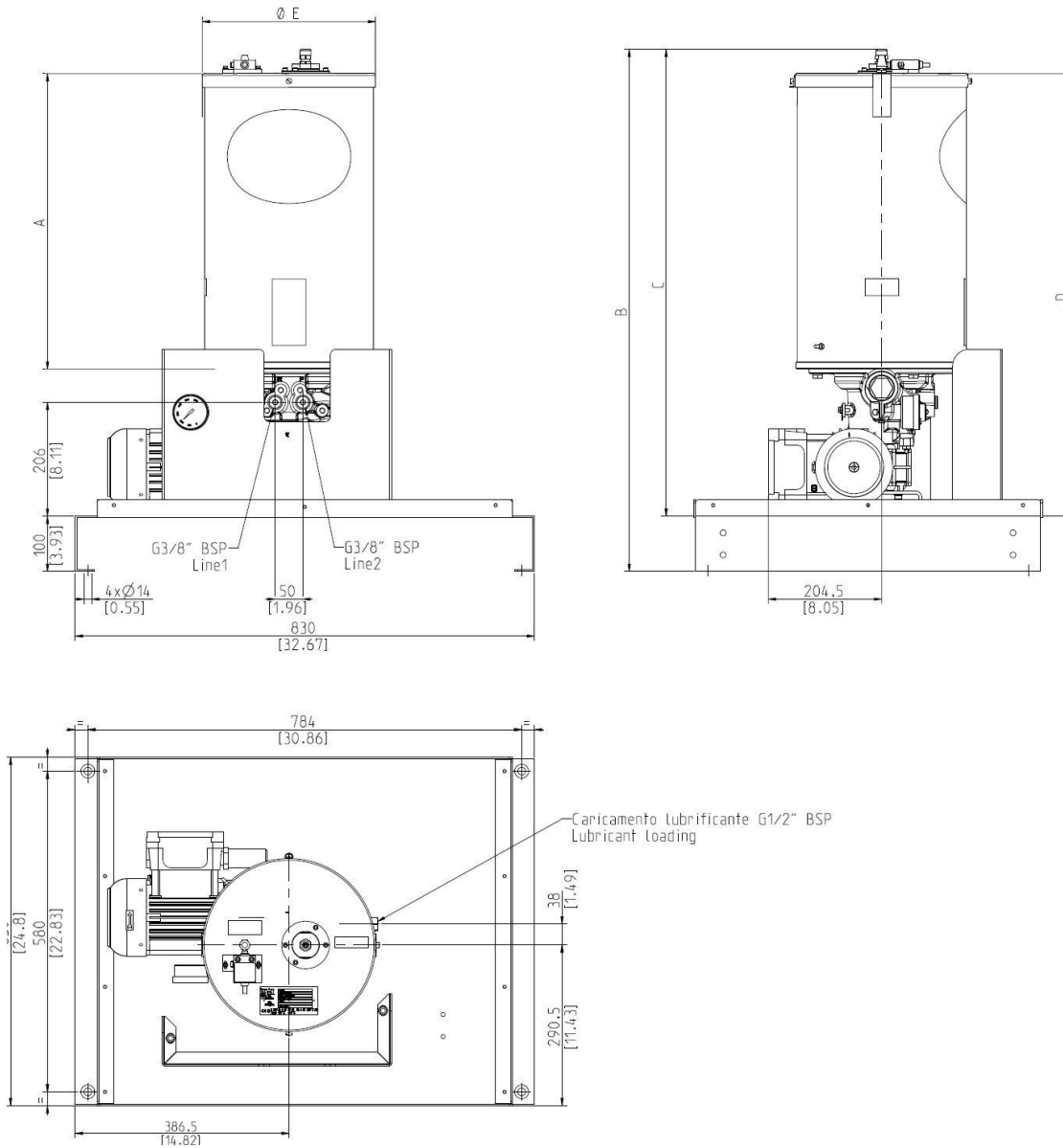




TECHNICAL INFORMATION

TECHNICAL FEATURES	
Maximum operating pressures	380 bar (5511 psi)
Output flow delivery	110 cm ³ /min total (standard) 55 cm ³ single pumping
Operating temperature	- 20 ÷ + 40 °C (- 4 ÷ +104 °F)
Operating humidity	90% rel humidity.
Degree of motor protection	IP 65
Viscosity at operating temperature	Lubricating oil Min. 32 cSt; grease Max. NLGI2

DIMENSIONS



	10 Kg	30 Kg	100 Kg
A	389 [15.3]	578 [22.7]	1028 [40.5]
B	756 [29.8]	945 [37.2]	1395 [54.9]
C	659 [25.9]	848 [33.4]	1298 [51.1]
D	614 [24.2]	803 [31.6]	1253 [49.3]
E	Ø313 [12.3]	Ø313 [12.3]	Ø413 [16.25]



MINI SUMO II ATEX ORDERING INFORMATION

Note: the pump order code has 7 numbers , the numbers 8,9,10 shall be used only if additional options are required.

Standard

				Data base	4°	5°/6°	7°	-	8°/9°	10°	11°
MINISUMO II ATEX PUMP				254	0	00	0		0	0	0
	Description	DROPSA code	CODE								
Tank	-	-	0								
	10kg	0297074	1								
	30kg	0297060	2								
	100kg	0297098	3								
Three-phase electric motor	Motor not present	-	00								
	STANDARD 230/400V 50Hz	3301771	01								
	Pneumatic motor	3140866	02								
	Does not have inverter	-	0								
4/2 electro-pneumatic inverter	24 V DC	0083570	1								
	24 V AC	0083571	2								
	110 V AC	0083572	3								
	230 V AC	0083573	4								
Hydraulic inverter		0086450	5								
Maximum minimum level	Grease capacitive Exi (minimum) + Microswitch Exd (max)	0297075 (10kg)	01								
		0297061 (30kg)	02								
		0297110 (100kg)	03								
	Exd oil level float	0295152 (10kg)	04								
		0295153 (30kg)	05								
		0295156 (100kg)	06								
	Oil / grease Laser 2 configurable digital outputs and 4÷20Ma Exd housing	0295145 (30kg)	07								
		0295135 (100kg)	08								
	Ultrasound	0297116 (30kg)	09								
		0297114 (100kg)	10								
Pumping elements	Two pumping elements	0298000	0								
	One pumping element	0298000-0298005	1								
Terminal board	Without terminal board	-	0								
	Terminal board complete with wiring	1525722	1								

* The level floats for oil signal the minimum and maximum level.
Contact our technical sales office for special supplies, for example version with separate outlets.

Spare part description		Code	Optional
Motors	3Ph - 0,37 Kw - 230Δ/400Y 50Hz 280Δ/480Y 60Hz	3301771	VIP 5 ATEX available. For information ask Dropsa.
	Pneumatic	3301787	
Reducer i=40	3301770		
10 kg capacitive level	0297076		
30 kg capacitive level	0297063		
100 kg capacitive level	0297115		
Microswitch	3164135		
Filling filter	0297007		
Paddle filter	0297161		
Tank o-ring	3190485		
By-pass	0234496		
Pressure gauge 0 - 600 Bar	3292154		
Pumping element	0298000C		
Metal pallet	0297166		

Distributor Info:

C2325PE WK 40/21

Dropsa products can be purchased from Dropsa subsidiary and Dropsa sales representatives, visit www.dropsa.com/contact or contact us sales@dropsa.com