

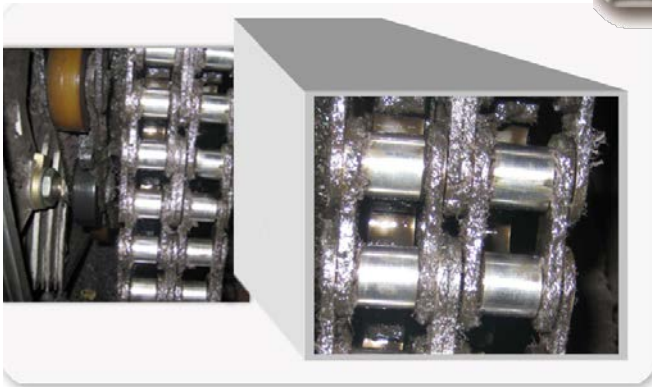
Near dry machine system for escalator chains for handling

Application Study of near dry machine DropsA system at:

Thyssen Krupp – Spain

Application:

Motor system for chains escalators (underground network - place of trial: Madrid and Barcelona)

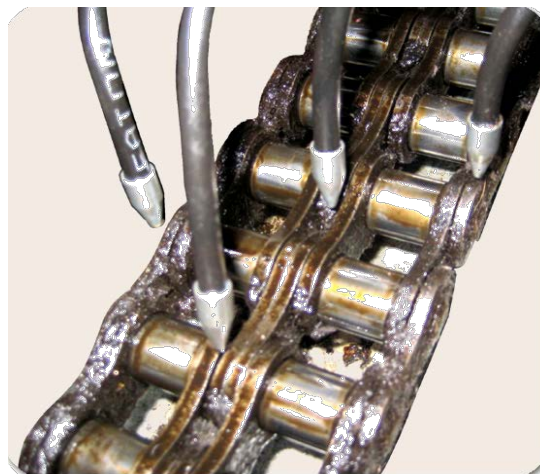
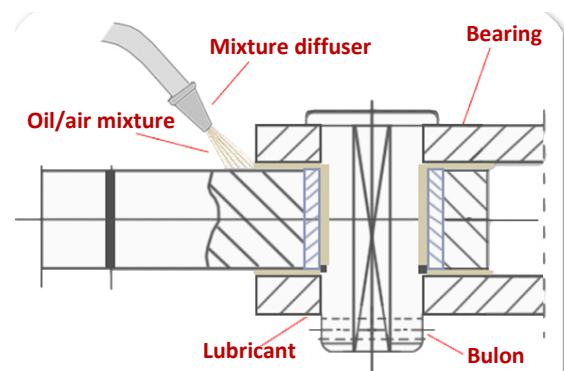


Analysis of the lubrication system:

The existing system used brushes for lubrication that resulting technical problems as: massive industrial waste that get dirty the chain, low penetration of the lubricant, ineffective lubrication, intensive maintenance.

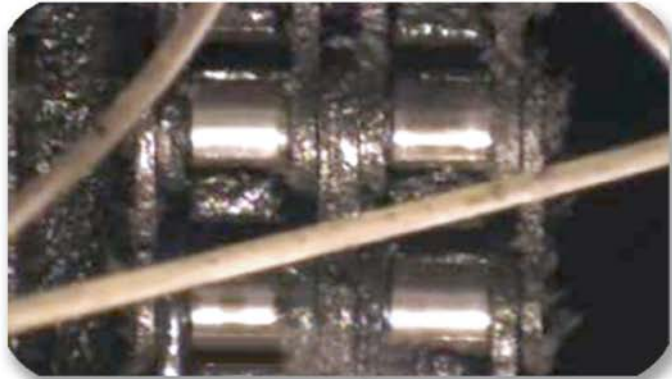
DropsA proposed:

- Lubrication system by spray nozzle
- Vip4 air

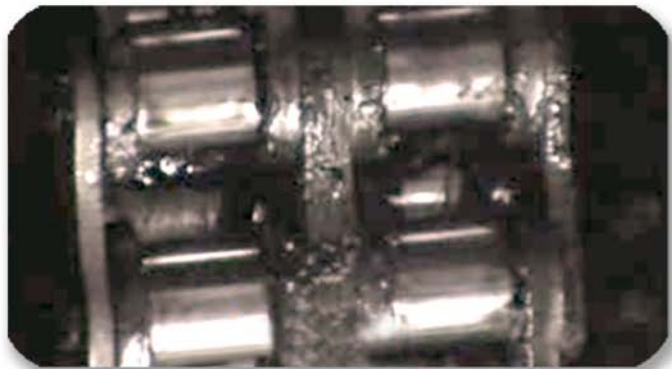


Benefits achieved

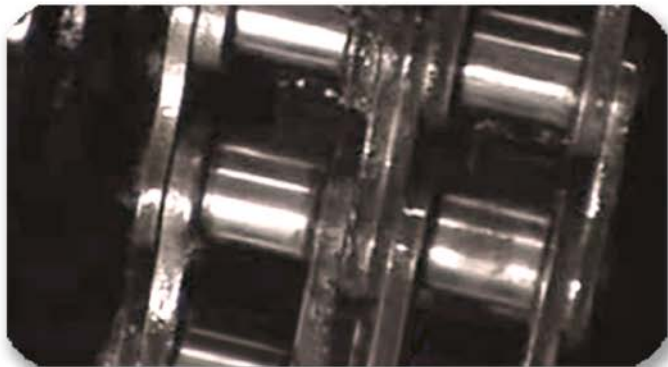
- Elimination of monthly monitoring by the operator 's
- Elimination of the problems caused by the chain jumping on the teeth of the 'gear
- Reservoir Load Range 4 months
- Preliminary study demonstrates an increase of chain life of 25%
- The quantity of lubricant used is reduced by 80%
- Number of cycles per day: 19.5
- Oil worn out per cycle: 1.28 cc
- Oil worn out per day: 24.96 cc
- Oil worn out per month: **0,77 L compared to 5 liters consumed with the old system**



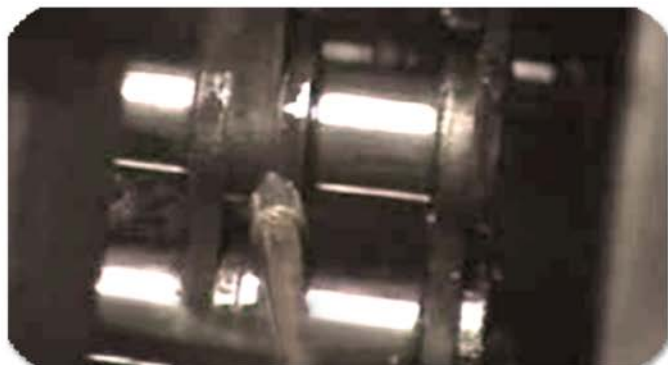
1 week later



2 weeks later



3 weeks later



4 WEEKS LATER