

## CONCTATS

[www.dropsa.com](http://www.dropsa.com)

[sales@dropsa.com](mailto:sales@dropsa.com)

### ITALIA

Dropsa SpA  
t. +39 02-250791  
f. +39 02-2507976

### U.K.

Dropsa (UK) Ltd  
t. +44 (0)1784-431177  
f. +44 (0)1784-438598

### GERMANY

Dropsa GmbH  
t. +49 (0)211-394-011  
f. +49 (0)211-394-013

### FRANCE

Dropsa Ame  
t. +33 (0)1-3993-0033  
f. +33 (0)1-3986-2636

### U.S.A.

Dropsa Corporation  
t. +1 586-566-1540  
f. +1 586-566-1541

### AUSTRALIA

Dropsa Australia Ltd.  
t. +61 (02)-9938-6644  
f. +61 (0)2-9938-6611

### BRAZIL

Dropsa Brasil Ind.e  
Com.Ltda  
t. +55 (0)11-563-10007  
f. +55 (0)11-563-19408

### CHINA

Dropsa Lubrication  
Systems (Shanghai)  
Co., Ltd  
t. +86 (021) 67740275  
f. +86 (021) 67740205

## PRESSURE INVERTER

**PART N. 86198 WORK PRESSURE: ADJUSTABLE FROM 10 TO 50 BAR MAX**

**PART N. 86199 WORK PRESSURE: ADJUSTABLE FROM 60 TO 300 BAR MAX**

**PART N. 86200 WORK PRESSURE: ADJUSTABLE FROM 70 TO 200 BAR MAX**

### OPERATING SEQUENCE

Oil flowing from pump through center section of plunger. A (fig. 1) enters chamber C and is forced into line 1. Plunger B is held to left by oil pressure.

As enough pressure build up to offset resistance of spring M1, plunger S1 in sequence valve rises, allowing oil to flow into chamber D.

Plunger A moves to left, and oil is forced into chamber E.

Plunger B moves to right (fig.2) and oil is forced into line 2. while line 1 is relieved (return flow).

As enough pressure builds up in line 2 to offset resistance of spring M2, oil is forced into chamber C and F. Plungers A and B reverse their positions, and oil is again delivered to line 1.

Appropriate reversal pressures can be obtained by adjustment load setting of spring M1,M2.

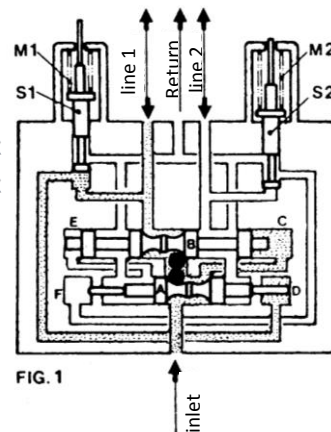


FIG. 1

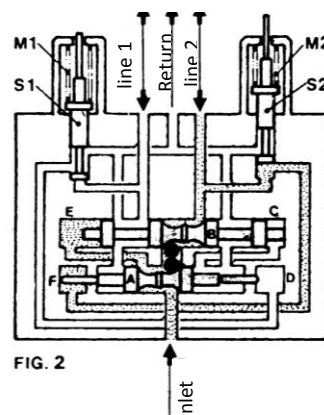
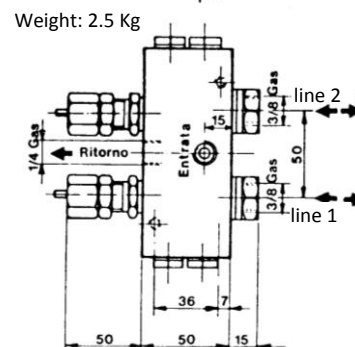
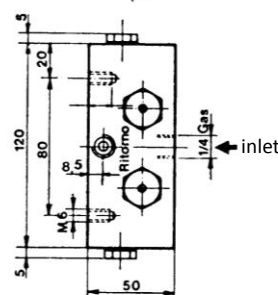


FIG. 2



Pos.	Description	Part N.	Q.ty
1	Label	265193	2
2	Adjustment nut	156024	2
3	Spring	156028	2
4	Spring	156027	2
	Spring	3191180	2
	Spring	3191197	2
	Spring	3191198	2
5	Nut	156025	2
6	Stem	156026	2
7	Valve body	156023	2
8	Gasket	156029	2
9	Gasket	18804	2
10	Washer	156034	2
11	Ball	20506	2
12	Gasket	3190111	1
13	Grub screw	622006	1
14	Body with pistons	86214	1
15	Pilot shaft	86217	2
16	Gasket	18814	4
17	Plug	3234058	2
18	Gasket	3190083	2
19	Plug	3234058	2
20	Fitting	86215	2
21	Gasket	3190093	2

With spring only Part N. 156028,  
adjustment 30-80 bar

With spring only Part N. 156027 and Part N. 156028,  
adjustment 70-200 bar

With spring only Part N. 156028 Part N. 3191180,  
adjustment 60-300 bar

With spring only Part N. 3191197 Part N. 3191198,  
adjustment 10-50 bar

**NOTE: Pay attention to the pistons mounting position before maintenance**

