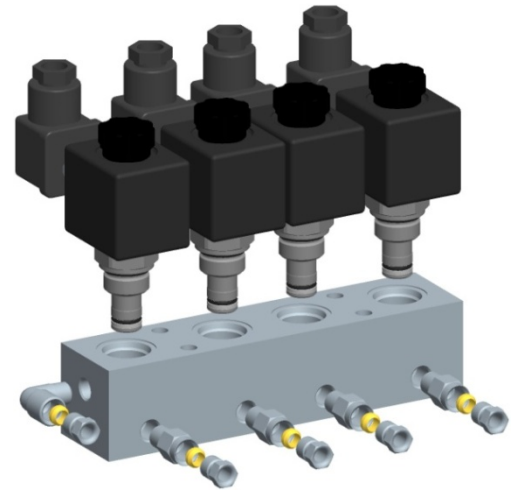


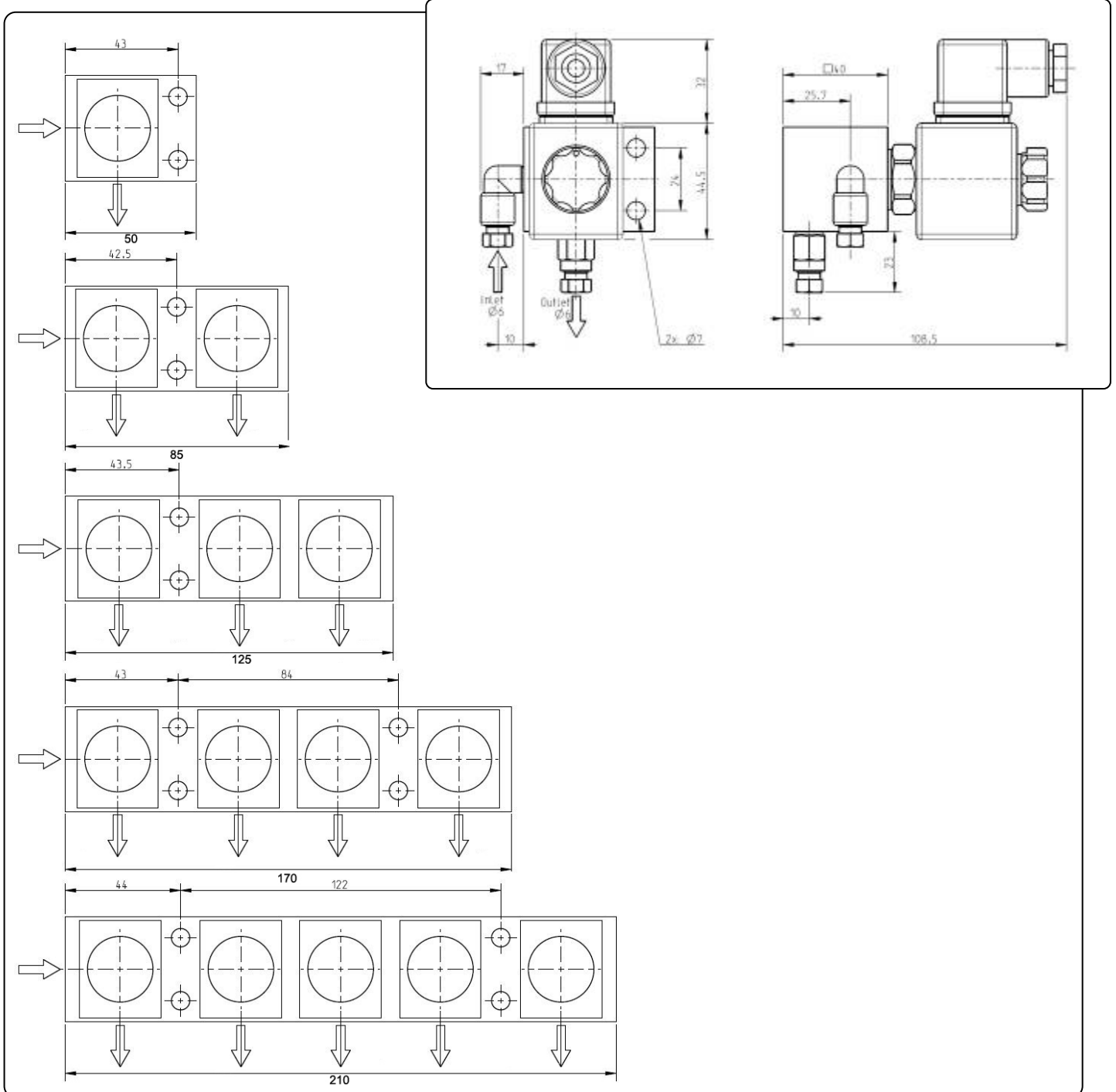
## ZONE VALVE

THE ZONE VALVE IS PRIMARILY USED FOR OIL APPLICATIONS. IT IS POSSIBLE TO HAVE BETWEEN 1 TO 5 ZONES. EACH ZONE OR OUTLET IS INDEPENDENTLY ACTIVATED BY 24 V DC SOLENOID COILS.

THIS VALVE CAN BE USED IN APPLICATIONS WHERE IT IS NECESSARY TO ISOLATE PARTS OF MACHINE. THE CENTRAL PLC OF THE MACHINE CONTROLS EACH ZONE INDEPENDENTLY THEREFORE NOT WASTING OIL BY OVERLUBRICATING ZONES WHICH ARE NOT IN USE. AN EXAMPLE OF THIS IS SPLIT CONVEYORS ON A BOTTLING LINE WHERE THE LUCRICATION OF THE CONVEYOR REQUIRES OIL ONLY WHEN THE BOTTLES ARE MOVING ON CERTAIN LINES.



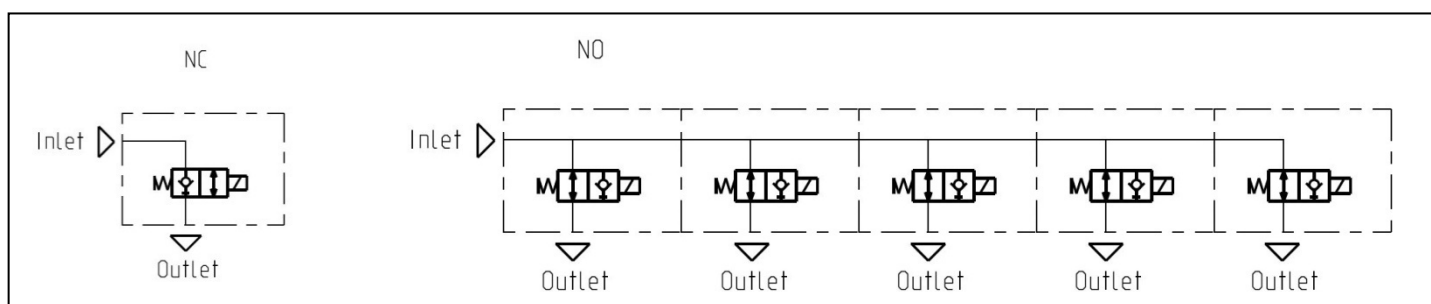
## DIMENSIONS



## TECHNICAL CHARACTERISTICS

SUPPLY VOLTAGE	24 V DC
POWER CONSUMPTION W	20
CURRENT A	0.9
MAX WORKING PRESSURE BAR (PSI)	350 (5000)
FLOW RANGE L/MIN	30 LPM
TEMPERATURE OF FLUID °C (°F)	FROM -20 TO 80 (FROM -4 TO 176)
VISCOSITY CST	FROM 20 TO 380

## HYDRAULIC SCHEMATIC



## ORDERING INFORMATION

		Outlets	Code		Qty
Manifold	NO	1	1900167	<input type="radio"/>	_____
		2	1900168	<input type="radio"/>	_____
		3	1900169	<input type="radio"/>	_____
		4	1900149	<input type="radio"/>	_____
		5	1900221	<input type="radio"/>	_____
	NC	1	1900222	<input type="radio"/>	_____
		2	1900223	<input type="radio"/>	_____
		3	1900224	<input type="radio"/>	_____
		4	1900225	<input type="radio"/>	_____
		5	1900226	<input type="radio"/>	_____
Spares	Description		Code		Qty
	Connector MPM 182-9-N21		0039988	<input type="radio"/>	_____
	Fitting-DIR SO-06 1/8 GAS		0092052	<input type="radio"/>	_____
	Olive for tube ø 6		0093006	<input type="radio"/>	_____
	Straight connector 1/8 (150 bar)		0910051	<input type="radio"/>	_____
	Connector - 90° 1/8(150 bar)		0911051	<input type="radio"/>	_____
	E. Val-2/2-NO-24VDC		3155211	<input type="radio"/>	_____
E. Val-2/2-NC-24VDC		3155212	<input type="radio"/>	_____	
Accessories	Description		Code		Qty
	Push-in 1/8 per tube ø 6 (65 bar)		3084578	<input type="radio"/>	_____
	Push-in 90° 1/8 per tube ø 6 (65 bar)		3084581	<input type="radio"/>	_____
	Push-in 1/8 per tube ø 8 (15 bar)		3084676	<input type="radio"/>	_____
	Push-in 90° 1/8 per tube ø 8 (15 bar)		3084672	<input type="radio"/>	_____
	Fitting 1/8 tube ø 6 (250 bar)		0091951	<input type="radio"/>	_____
	Fitting 90° 1/8 tube ø 6 (250 bar)		0093185	<input type="radio"/>	_____
	Fitting 1/8 tube ø 8 (250 bar)		0091958	<input type="radio"/>	_____
	Fitting 90° 1/8 tube ø 8 (250 bar)		0093192	<input type="radio"/>	_____
Plug for redundant outlets		3234040	<input type="radio"/>	_____	

[sales@dropsa.com](mailto:sales@dropsa.com)  
[www.dropsa.com](http://www.dropsa.com)

**ITALIA**  
Dropsa SpA  
t. +39 02-250791  
f.+39 02-25079767  
**U.S.A.**  
Dropsa Corporation  
t. +1 586-566-1540  
f. +1 586-566-1541

**U.K.**  
Dropsa (UK) Ltd  
t. +44 (0)1784-431177  
f. +44 (0)1784-438598  
**AUSTRALIA**  
Dropsa Australia Ltd.  
t. +61 (02)-9938-6644  
f. +61 (0)2-9938-6611

**GERMANY**  
Dropsa GmbH  
t. +49 (0)211-394-011  
f. +49 (0)211-394-013  
**BRAZIL**  
Dropsa Brasil Ind.e Com.Ltda  
t. +55 (0)11-563-10007  
f. +55 (0)11-563-19408

**FRANCE**  
Dropsa Ame  
t. +33 (0)1-3993-0033  
f. +33 (0)1-3986-2636  
**CHINA**  
Dropsa Lubrication Systems (Shanghai) Co., Ltd  
t. +86 (021) 67740275  
f. +86 (021) 67740205