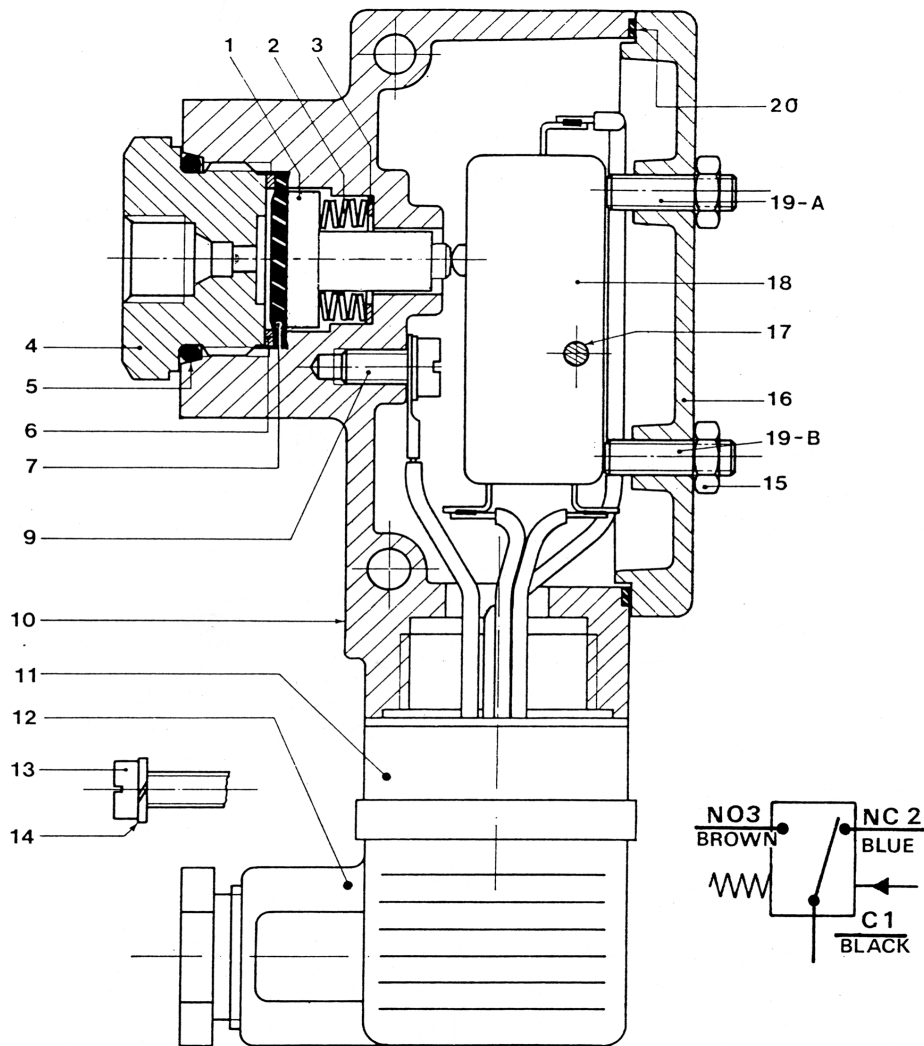


CONTROL

Pressure control



Pos.	Description	Part. No.	Q.ty	Pos.	Description	Part. No.	Q.ty
1	Pushbutton	3024106	1	11	Base for connector	0039975	1
2	Spring 20 bar	0010537	6	12	Connector	0039976	1
	Spring 40 bar	0010536	5	13	Screw, socket head	0012668	4
3	Disc	3131107	1	14	Washer, spring	0016006	4
4	Plug	3234048	1	15	Nut	0016401	2
5	Or- Gasket,	0061107	1	16	Cover	3042158	1
6	Gasket, O-Ring	0234084	1	17	Dowel	3001258	1
7	Diaphragm	3189106	1	18	Micro-switch	3164111	1
8	Plate for 201256	3310060	1	19	Screw, grub	0015802	2
9	Screw, socket head	0012665	1	20	Gasket	3190197	1
10	Body	3072246	1	21	Plate for 201257	3310062	1
				22	Plate for 201317	3311123	1

DROPSA

ITALIA

Dropsa SpA
t. +39 02-250791
f.+39 02-25079767

U.K.

Dropsa (UK) Ltd
t. +44 (0)1784-431177
f. +44 (0)1784-438598

GERMANY

Dropsa GmbH
t. +49 (0)211-394-011
f. +49 (0)211-394-013

FRANCE

Dropsa Ame
t. +33 (0)1-3993-0033
f. +33 (0)1-3986-2636

CHINA

Dropsa Lubrication Systems
(Shanghai) Co., Ltd
t. +86 (021) 67740275
f. +86 (021) 67740205

U.S.A.

Dropsa USA Incorporated
t. +1 586-566-1540
f. +1 586-566-1541

AUSTRALIA

Dropsa Australia Pty
t. +61 (02)-9938-6644
f. +61 (0)2-9938-6611

BRAZIL

Dropsa Do Brasil Ind.e
Com.Ltda
t. +55 (0)11-563-10007
f. +55 (0)11-563-19408