

HAMMER PUMP S

THE RELIABLE, PRECISION-DRIVEN LUBRICATION PUMP

DropsA



HAMMER PUMP S

HYDRAULIC-DRIVEN SYSTEM ENGINEERED FOR PRECISION AND EFFICIENCY IN LUBRICATION

The Hammer Pump S is designed for efficient operation in hydraulic systems and guarantees reliable and precise lubrication together with consistent performance and easy maintenance.

It is designed to supply lubricant at one lubrication point, and is equipped with a lubrication cartridge serving as a tank. Each lubrication cycle is activated by an external hydraulic circuit.

Hydraulic pressure must not be continuously applied to the pump. To generate a new lubrication cycle, the hydraulic line must be depressurised after each lubrication cycle (single-acting).

The lubrication point can be lubricated manually thanks to the grease nipple.

APPLICATIONS

- Industrial Machinery: in manufacturing and processing plants
- Heavy-duty construction Equipment: for hydraulic systems
- Agricultural Machinery: for farming equipment

ADVANTAGES

- Precise control: adjustable metering screw allows for exact control of the lubrication amount, ensuring optimal performance and making it an ideal choice for various industrial applications
- Hydraulic efficiency: use of hydraulic oil for operation, integrating seamlessly with existing hydraulic systems
- Easy maintenance: simple cartridge change and venting procedures minimize downtime and maintenance efforts
- Versatile application: suitable for direct supply to a lubrication point, making it ideal for various industrial and mechanical systems
- Robust design and easy maintenance: ensuring long-term reliability and performance



CHARACTERISTICS

AVAILABLE IN ALUMINIUM AND GALVANISED STEEL

HYDRAULICALLY DRIVEN WITH ADJUSTABLE DELIVERY RATE

USER-FRIENDLY DESIGN WITH EASY CARTRIDGE REPLACEMENT AND MANUAL LUBRICATION OPTION

LUBRICATION DELIVERY TYPE: HYDRAULIC FLUID
 HYDRAULIC PRESSURE RANGE: 30-70 BAR
 OPERATING TEMPERATURE RANGE: 0 - 60 °C

IP 65 PROTECTION TO WITHSTAND HARSH ENVIRONMENTS AND AGAINST DUST OR WATER

COMPACT AND VERSATILE, EASY TO INSTALL THANKS TO THE SMALL DIMENSIONS

TECHNICAL SPECIFICATIONS

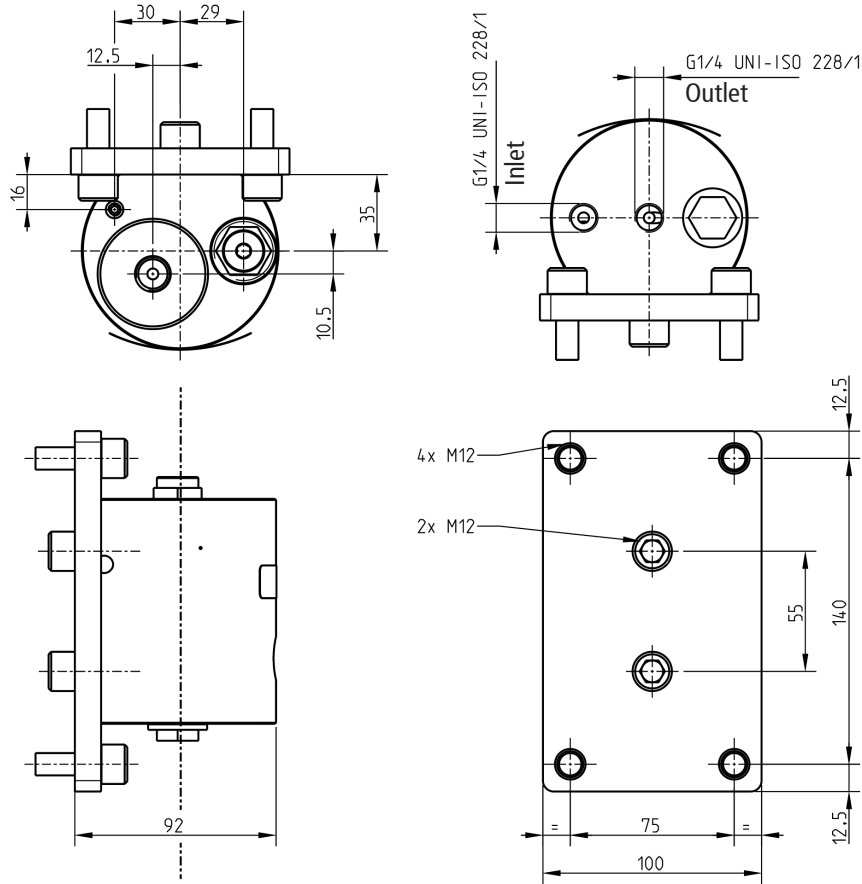
Pump type	Metering pump
Actuation type	Hydraulic
Hydraulic line connection	G1/4
Lubrication line connection	G1/4
Temperature range	0-60 °C
Refill	Replaceable cartridge
Protection class according to EN60529	IP 65
Weight	Approximately 3 kg without cartridge
Use	For direct supply from a lubrication point
Lubricant quantity	0.5 cm ³ / dose (the values are by way of example only)
Hydraulic operating pressure	200 bar
Supply oil	Hydraulic fluid
Cartridge lubricant	Grease gr 150

C2413PE - WK32/24

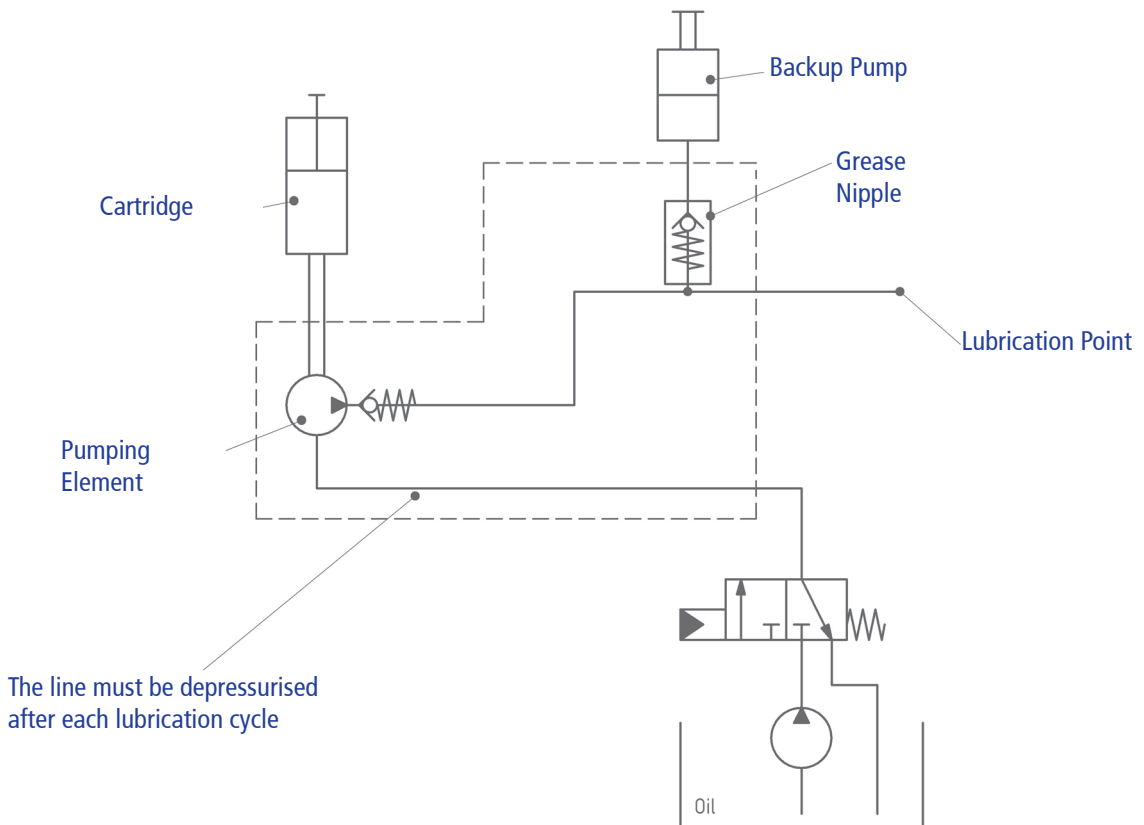
GALVANISED STEEL - ALUMINIUM

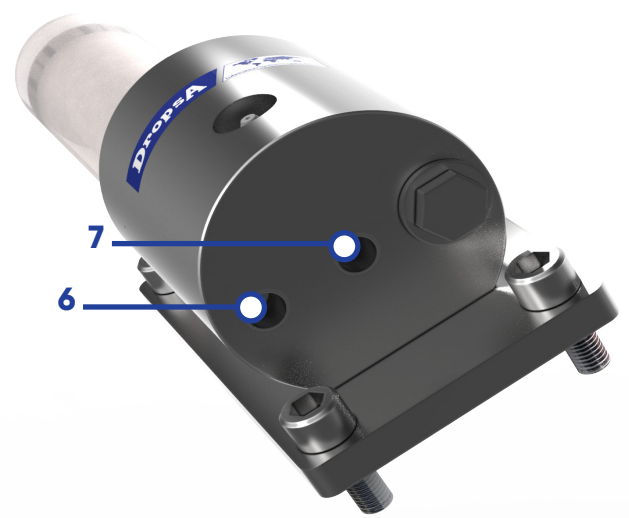
OVERALL DIMENSIONS IN: MM [IN]

Dropsa



HYDRAULIC DIAGRAM





1. Cartridge	2. Screw Cap with optional Hydraulic Inlet
3. Pump Body	4. Grease Nipple for Manual Lubrication
5. Fastening Thread (4x)	6. Hydraulic Inlet
7. Grease Outlet	8. Optional P Hydraulics Inlet
9. Screw Cap	

ORDERING INFORMATION

DESCRIPTION	CODE
Hammer Pump S - Galvanised Steel	3414110
Hammer Pump S - Aluminium	3414111
Cartridge gr 150	3079387