



CHARACTERISTICS

- **Operating pressure:**
400 bar (5800 psi)

- **Working cycle:**
max 100 per minute

- **Temperature:**
from -30°C to +80°C.

- **Lubricants:**
265 ASTM (NLGI 2)

- **Fixed discharge:**
1,5 cm³

Series BHS – fixed discharge 1,5 cm³

DESCRIPTION

Anti friction steel body, lapped and temperate steel pistons for a superior sealing. The feeders do not employ indicator turrets and are used for special applications.

Device to join or separate two outlets, galvanic treatment of exposed parts.

The metering valves are normally supplied regulated with the maximum flow rate, unless otherwise indicated in the order.



TECHNICAL CHARACTERISTICS

Temperature: -30 ÷ +80°C.
Max. pressure (input): 400 bar (5800 psi.)
Working cycles: 100/min.
Min. viscosity: 100 cSt (462 SSU)
Max. Grease: 265 ASTM (NLGI 2)*
Connections:
Inlet: 1/4"
Outlet: 1/4"

(*) For different types of grease please contact your supplier.

If you want to use a single output just replace the sealing disc X **cod. 622077** with the sealing disc Y **cod. 622076**. (see drawing).
 In this case the maximum flow rate for each complete cycle goes from 1,5 cm³ a 3 cm³.

FASTENING

light alloy compasses **cod. n 3008107** to avoid deformations caused by too tight a tightening.

ORDERING INFORMATION

Thread	Cod.	Weight		N. outlets
		Kg.	Lbs.	
Standard BSP	B-53044	0,820	1.80	1-2
	B-53045	1,230	2.71	2-4
	B-53046	1,560	3.44	3-6
	B-53047	1,920	4.23	4-8
Din 3852 X BSP	B-53082	0,820	1.80	1-2
	B-53084	1,230	2.71	2-4
	B-53086	1,560	3.44	3-6
	B-53088	1,920	4.23	4-8
NPTF	B-53083	0,820	1.80	1-2
	B-53085	1,230	2.71	2-4
	B-53087	1,560	3.44	3-6
	B-53089	1,920	4.23	4-8

APPLICATIONS

- Machine tools
- Medium-sized presses
- Packaging production machines
- Plastic injection presses
- Gear boxes

INSTALLATION/OPERATION

Each feeder discharge is composed by a servo-piston (A) and metering piston (B). The movement of the pistons shown in fig. D-E/F-G shows the operation of the dosing unit with the alternation of the lubricant supply in the two lines. Figures D-E separate outputs – Figure F-G with one output. Power supplies are normally supplied with two separate outputs, unless otherwise indicated in order.

WORKING PRINCIPLE

2 outlets

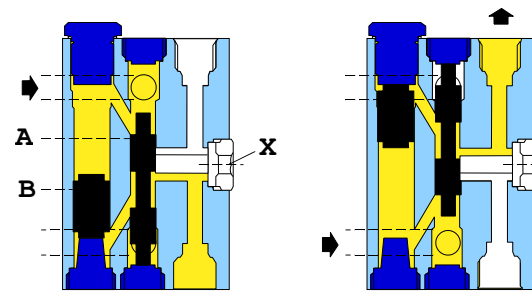


FIG. D.

FIG. E.

1 outlet

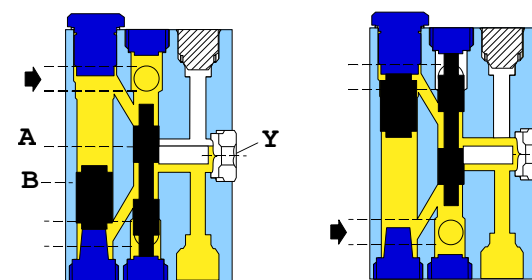


FIG. F.

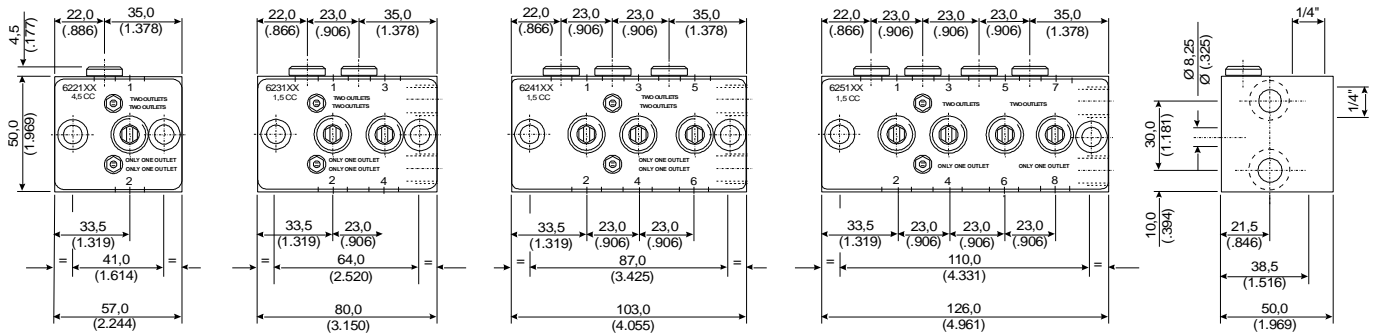
FIG. G.

Metering valves Series BHS



TECHNOSYSTEMS

A **DROPSA** Company



The use of the standard DROPSA is cheaper because it eliminates a fitting. Normally the valves are supplied with a double housing for tube diameter 8mm.

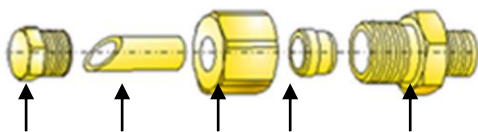
NON RETURN VALVE TO BE APPLIED IF REQUIRED ON THE OUTLET OF THE HOSE CONNECTOR. TO BE ORDERED SEPARATELY.
COD 92313 BSP
COD 92340 NPTF



1/4" BSP
 1/4" NPTF

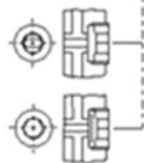
DROPSA STANDARD				
REDUCTION	DOUBLE CONE	NUT	Ø PIPE	CAP
671038	93006 93008	92014 92053	Ø 6 Ø 8	91011 91011

INLET 1/4"



DROPSA STANDARD-DIN 3852 BSP Ø mm				
CAP	Ø PIPE	NUT	RING	FITTING
926001	8	91402	91596	92266
	10	91406	91601	92242
	12	91411	91607	92198
NPTF DRY SEAL Ø INCHES				
850281	5/16	850201	850221	850252
	3/8	850202	850222	850254
	1/2	850203	850223	850256

*622077

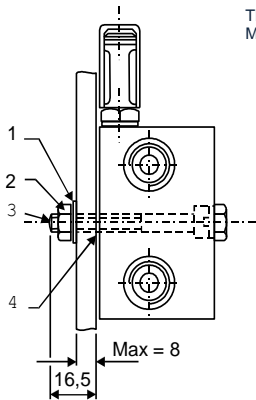


*622076

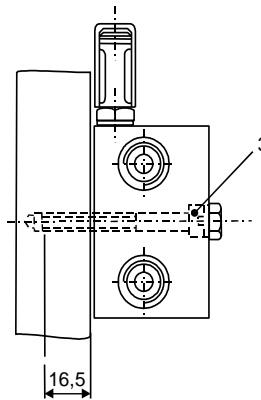
DIN 3852 BSP Ø mm				
FITTING	RING	NUT	Ø PIPE	CAP
91952	91590	91396	6	622167
91959	91596	91401	8	
91966	91601	91406	10	
NPTF DRY SEAL Ø INCHES				
850250	850220	850200	1/4	850281
850252	850221	850201	5/8	
850254	850222	850202	3/8	

*THE SEALING DISC FOR TWO OUTPUTS IS MARKED AT THE HEAD WITH TWO PARALLEL MARKS COD 622076, WHILE THE ONE-WAY SEALING DISC IS MARKED IN THE CENTRE WITH A SMALL CIRCLE COD 622076.

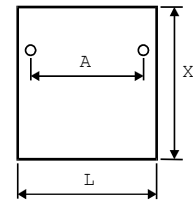
THE FIXING DETAILS OF THE DOSING VALVE INDICATED WITH * MUST BE ORDERED SEPARATELY



Pos.	Part No.	Qty.	Description	
•1	16012	2	Spring washer	Metric
•2	16406	2	Nut M8 - Hex	
•3	12552	2	Screw M8 x 60	
•4	3008107	2	Bushing	
•1	16012	2	Spring washer	Inch
•2	16500	2	Nut 5/16-24 UNF x 2-1/2	
•3	12561	2	Screw 5/16-24 UNF x 2-1/2	
•4	3008107	2	Bushing	



PLATES FOR WELDING



N	COD.	DIMENSIONS MM.(INCHES)		
		A	L	X
1	111581	41 (1.614)	60 (2.362)	140 (5.511)
2	111582	64 (2.520)	85 (3.346)	140 (5.511)
3	111583	87 (3.425)	110 (4.330)	140 (5.511)
4	111584	110 (4.330)	130 (5.118)	140 (5.511)

www.dropsa.com

Lubrication Made Simple