

Features

- **Voltages available:**
24V DC
110V AC, 230V AC,
50/60 Hz, as
standard, other
available on request.
- **Max. delivery:**
40L/min (10.56 GPM
(Gallons per minute))
with Oil 100 cSt and
inlet pressure of 16
bar (235 psi).
- **Max. working
pressure:**
400 bar (5880 psi).

Applications

- **Dual Line:** inversion
of Dual line systems.
- **Progressive and
zoned systems:** by
plugging port 1 or 2.
The valve can be
used for zone
complex circuits.
- **Grease
applications:**
particularly suited for
grease, it can be
applied to any circuit
requiring a 4/2 valve.

Electro-pneumatic Valve (4/2)

**An electro-pneumatic Valve for oil and grease in
Dual Line and hydraulic systems for pressure up
to 400 bar (5880 psi)**



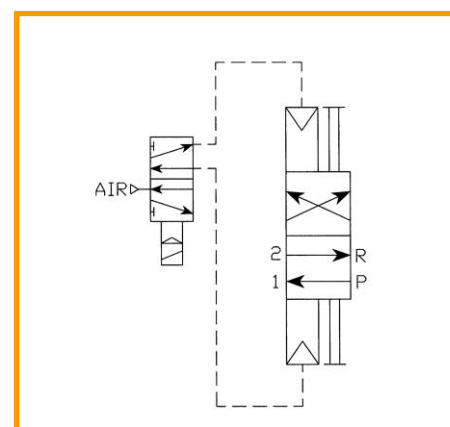
AUTOMATIC CONTROL OF THE LUBRICATION CYCLE.

The Electro-pneumatic Valve has been designed to satisfy a wide range of requirements.

Using the compressed air provided by the user, the Electro-pneumatic valve puts into communication alternatively the two outlet lines with the valve's single inlet line where the lubricant is in pressure.

The solenoid valve is therefore activated (and powered) directly by the electrical equipments that control the system. In this way it automatically controls the lubrication cycle.

CIRCUIT DIAGRAM:



ELECTRO-PNEUMATIC VALVE

Contacts

www.dropsa.com
sales@dropsa.com

ITALY

Dropsa SpA
 t. +39 02-250791
 f.+39 02-25079767

U.K.

Dropsa (UK) Ltd
 t. +44 (0)1784-431177
 f. +44 (0)1784-438598

GERMANY

Dropsa GmbH
 t. +49 (0)211-394-011
 f. +49 (0)211-394-013

FRANCE

Dropsa Ame
 t. +33 (0)1-3993-0033
 f. +33 (0)1-3986-2636

CHINA

Dropsa Lubrication Systems
 (Shanghai) Co., Ltd
 t. +86 (021) 67740275
 f. +86 (021) 67740205

U.S.A.

Dropsa Corporation
 t. +1 586-566-1540
 f. +1 586-566-1541

AUSTRALIA

Dropsa Australia Ltd.
 t. +61 (0)2-9938-600644
 f. +61 (0)2-9938-6611

BRAZIL

Dropsa
 t. +55 (0)11-563-10007
 f. +55 (0)11-563-19408

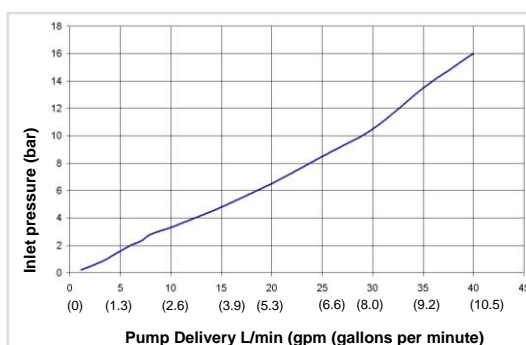
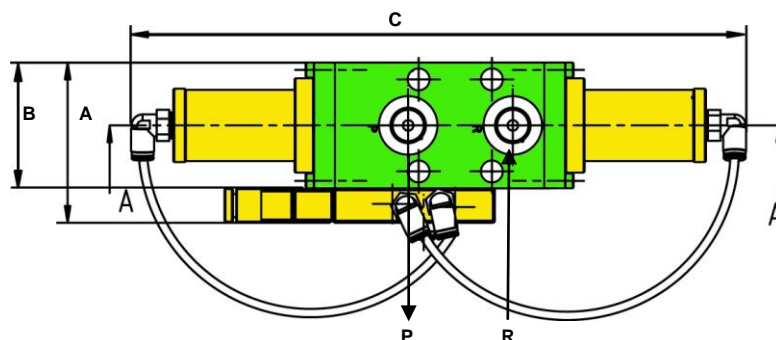
Technical Information

TECHNICAL CHARACTERISTICS

Max. delivery (Oil 100 cSt)	40L/min. (10.56 GPM)	Voltage	24V DC
Max. operating pressure	400 bar (5880 psi)		24 AC, 110V AC, 230V AC,- 50/60 Hz (Other voltages available on request)
Air Pressure	3 ÷ 10 bar (44 ÷ 147 psi)	Power absorption	1w
Lubricants	Oil min. 32 cSt max. 1000 cSt Grease max. NLGI 2	Working temperature	-30° C ÷ + 50° C (-22° ÷ +122° F)
Port (R – P – 1 – 2)	3/8" BSP	Humidity	90°
Protection Grade	IP-55	Weight	7,5 Kg (16.53 lb)

DIMENSIONS

Pos.	mm (in.)
A	77 (3.03)
B	60 (2.36)
C	293 (11.53)



PERFORMANCE PRESSURE VS. FLOW OIL 100 cST

■ Pressure P (bar) (P->1) & (P->2)

Ordering Information

ELECTRO-PNEUMATIC VALVE

Part No.	Description
083450	24V DC
083451	24V DC 50/60 Hz
083452	110V AC 50/60 Hz
083453	230V AC 50/60 Hz

SPARE PARTS

Part No.	Description
3155154	Solenoid 24V DC
3155155	Solenoid 24V AC 50/60 Hz
3155156	Solenoid 110V AC 50/60 Hz
3155157	Solenoid 230V AC 50/60 Hz