



# FEEDER BLOCK SERIES AG 6F

Fixed discharge 3 cc. per stroke  
(.183 cu. in./stroke) Dual Line System

671190 672190  
673190 674190  
671180 672180  
673180 674180  
671140 672140  
673140 674140

**ENGLISH**

## PRODUCT DATA SHEET

### DESCRIPTION:

The feeder body is made of special anti-friction steel. Pistons are made of tempered steel. Bores and pistons are lapped to provide superior sealing. These feeders do not employ indicator turrets (see AG6 series) and are used for special applications. The body has a galvanized finish and features an adaptor for single or double outlet conversion. They are set by the factory at 3 cc. (.183 cu. in.) unless otherwise requested.

### SPECIFICATION:

- Temperature range:** -30 to +80°C.
- Max. pressure (inlet):** 400 bar (5800 psi.)
- Max. Cycles:** 100/min.
- Min. Viscosity:** 100 cSt (462 SSU)
- Grease Max.:** 265 ASTM (NLGI 2)\*

(\*) For different type of grease please contact your supplier

### Connections

**Inlet:** 3/8"  
**Outlet:** 1/4"

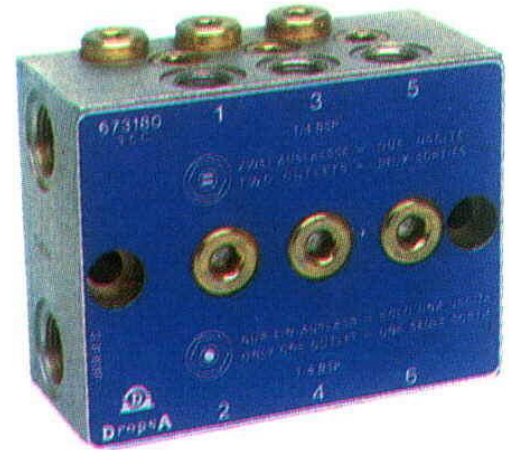
### ORDERING INFORMATION:

Ordering is by Part No., refer to the following table:

Thread	Part No.	Weight.		No. Outlets.
		Kg.	Lbs.	
Dropsa Standard BSP	671180	1,560	3.43	1-2
	672180	2,160	4.76	2-4
	673180	2,820	6.21	3-6
	674180	3,370	7.42	4-8
Din 3852 X BSP	671190	1,560	3.43	1-2
	672190	2,160	4.76	2-4
	673190	2,820	6.21	3-6
	674190	3,370	7.42	4-8
NPTF	671140	1,560	3.43	1-2
	672140	2,160	4.76	2-4
	673140	2,820	6.21	3-6
	674140	3,370	7.42	4-8

### INSTALLATION/OPERATION:

**Function:**(Refer to Figs. 1 and 3.)The feeder discharge is controlled by a servo-piston (A) and a metering piston (B) and can be arranged to provide a single or double outlet. Fig. D-E = 2 separate outlets Fig. F-G. = 1 outlet. Feeders are normally supplied with double outlets unless otherwise specified. Retrospective conversion can be undertaken by fitting adaptor Y (Part No. 622076) for single outlet and X (Part No. 622077) for double outlet (see following page). When single outlet feeders are used the discharge per complete cycle = 6 cc./stroke (.366 cu. in./stroke).



**Dimensions:** (Refer to Fig. 2.).

**Mounting:** (Refer to Fig. 2.). Aluminium bushings (Part No. 3008107) are supplied for mounting on uneven surfaces to prevent distortion or damage due to overtightening.

### FUNCTION

#### 2 OUTLETS

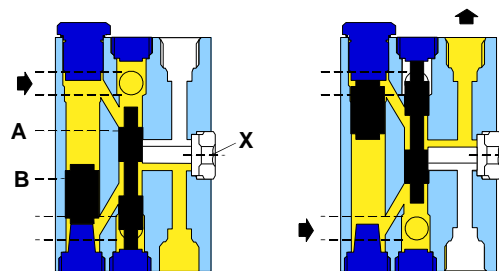


FIG. D.

FIG. E.

#### 1 OUTLET

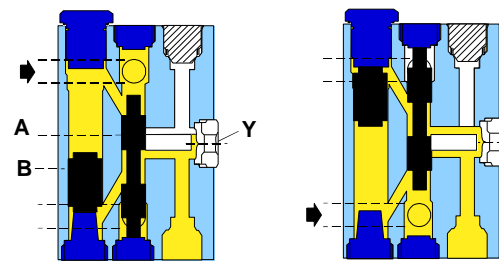
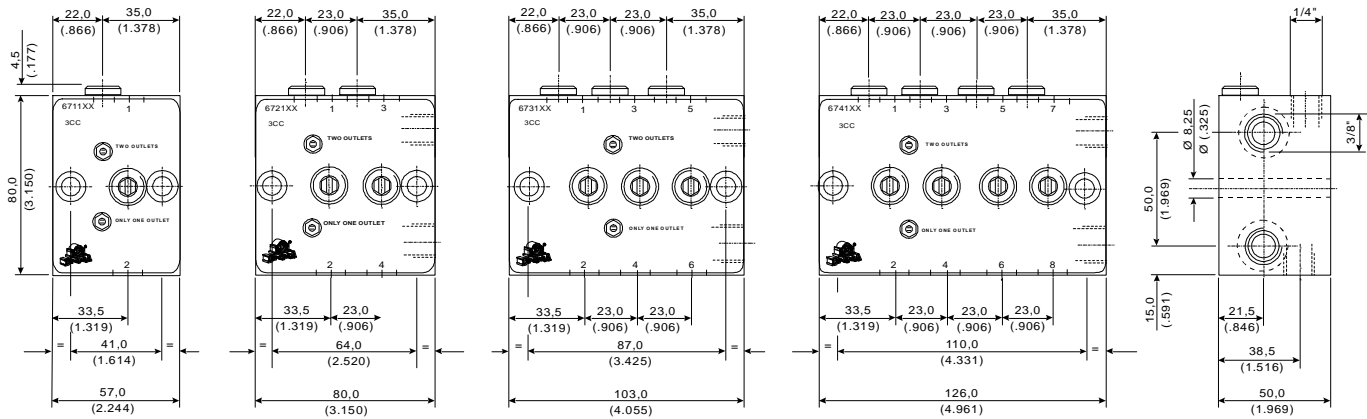


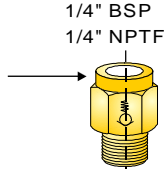
FIG. F.

FIG. G.



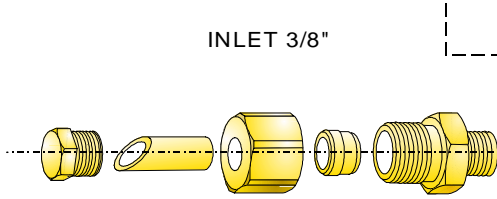
Dropsa Standard feeder blocks are normally supplied with outlets having a conical seating for Ø8 mm. (5/16") tube.  
This is simple and cost effective as no fitting is required.

If required a check-valve **Part No. 92313 BSP** or **Part No. 92340 NPTF** can be fitted at the outlet. Order separately.

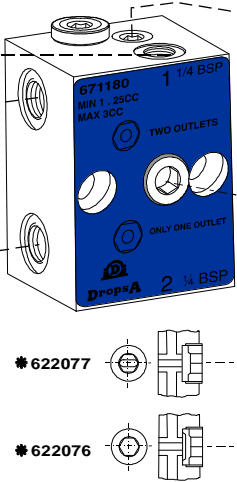


DROPSA STANDARD				
Reducer	Cone	Bush	Ø Tube	Plug
671038	93006	92014	Ø 6	91011
	93008	92053	Ø 8	91011

INLET 3/8"



DROPSA STANDARD DIN 3852 BSP Ø mm.				
Plug	Tube Ø	Nut	Ring	Fitting
926002	Ø 8	91406	91601	92269
	Ø 10	91411	91607	92240
	Ø 12	91416	91612	92241
NPTF DRY SEAL Ø INCHES				
850282	Ø 5/16	850202	850222	850255
	Ø 3/8	850203	850223	850257
	Ø 1/2	850204	850224	850259



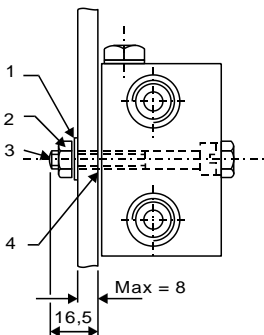
OUTLET 1/4"

DIN 3852 BSP Ø mm				
Fitting	Ring	Nut	Ø Tube	Plug
91952	91590	91396	Ø 6	622167
91959	91596	91401	Ø 8	
91966	91601	91406	Ø 10	
NPTF DRY SEAL Ø INCHES				
850250	850220	850200	Ø 1/4	850281
850252	850221	850201	Ø 5/16	
850254	850222	850202	Ø 3/8	

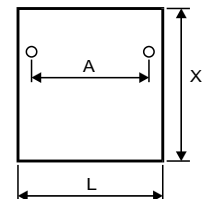
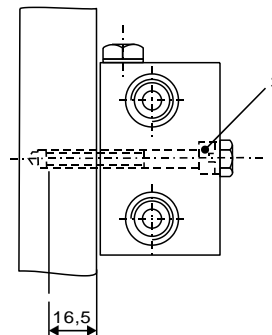
- The double outlet adaptor (**622077**) is identifiable by two parallel line markings in the centre; the single outlet adaptor (**622076**) has a circular marking only.

WELD PLATES FOR FEEDERS

The fixing parts which are indicated thus • are to be ordered separately.



Pos.	Part No.	Qty.	Description	
• 1	16012	2	Spring washer	Metric
• 2	16406	2	Nut M8 - Hex	
• 3	12552	2	Screw M8 x 60	
4	3008107	2	Bushing	
• 1	16012	2	Spring washer	Inch
• 2	16500	2	Nut 5/16-24 UNF x 2-1/2	
• 3	12561	2	Screw 5/16-24 UNF x 2-1/2	
4	3008107	2	Bushing	



Pos.	Part No.	Dimensions (inches)		
		A	L	X
1	111581	41 (1.614")	60 (2.362")	140 (5.511")
2	111582	64 (2.520")	85 (3.346")	140 (5.511")
3	111583	87 (3.425")	110 (4.330")	140 (5.511")
4	111584	110 (4.330")	130 (5.118")	140 (5.511")

**ITALIA**  
Dropsa SpA  
t. +39 02-250791  
f. +39 02-25079767

**U.K.**  
Dropsa (UK) Ltd  
t. +44 (0)1784-431177  
f. +44 (0)1784-438598

**GERMANY**  
Dropsa GmbH  
t. +49 (0)211-394-011  
f. +49 (0)211-394-013

**FRANCE**  
Dropsa Ame  
t. +33 (0)1-3993-0033  
f. +33 (0)1-3986-2636

**CHINA**  
Dropsa Lubrication Systems  
(Shanghai) Co., Ltd  
t. +86 (021) 67740275  
f. +86 (021) 67740205

**U.S.A.**  
Dropsa USA Incorporated  
t. +1 586-566-1540  
f. +1 586-566-1541

**AUSTRALIA**  
Dropsa Australia Pty  
t. +61 (02)-9938-6644  
f. +61 (0)2-9938-6611

**BRAZIL**  
Dropsa Do Brasil Ind.e  
Com.Ltda  
t. +55 (0)11-563-10007  
f. +55 (0)11-563-19408