

# NPZ PROGRESSIVE DIVIDER

## THE DIVIDERS

NPZ Progressive metering dividers have a compact and thought-out design, which makes them the ideal solution for grease lubrication in applications that require minimum dosage but accurate lubrication in small spaces. The NPZ dividers are especially designed for heavy equipment and trailers. Translating years of experience into a product that is fit for duty.



DropsaVET NPZ is a distributor that utilises the progressive movement of pistons to dispense precise amounts of lubricant to multiple lubrication points.

The lubrication cycle can be controlled by installing a VET ultrasensor on any metering divider element. This sensor detects or monitors the movement of the progressive pistons.

The NPZ progressive divider is also available in AISI 316. This makes an already durable product even more everlasting. The AISI 316 version is extremely suitable for corrosive environments.

## OPERATING PRINCIPLE

The NPZ progressive system is expandable. Moreover, its modularity allows for cost-effective replacements of individual parts. Blockages in the system can easily be found due to the progressive working of the metering dividers.

The primary divider supplies the secondary divider with the pre-determined amount of grease. This secondary divider feeds the lubrication points with grease. Multiple secondary dividers can be connected to the primary divider. One divider can have a maximum of 24 lubrication points.

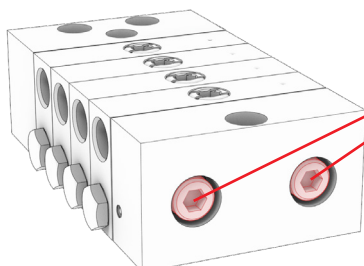
There are six types of metering elements:

- NPZ 025
- NPZ 045
- NPZ 075
- NPZ 105
- NPZ 150
- NPZ 200

Outlets can be given more grease by combining metering elements or plugging them. This will give one outlet two times the regular output. Also bridge elements can be used to achieve the desired grease output.

## ADVANTAGES

- NPZ comes in a compact and sleek design
- A complete range of accessories and bridge elements for modular design
- The assembly screws are integrated in the final element without protruding, which facilitates installation in small spaces
- Possibility to mount a grease nipple on the inlet element, eliminating fragile connectors
- Easily accessible inner plug
- M10x1 thread on all connections



The assembly screws are integrated in the final element without protruding, which facilitates installation in small spaces

## FEATURES

- OPERATING PRESSURE UP TO 300 BAR (4350 PSI)
- SUITABLE FOR BOTH OIL AND GREASE
- SAFE AND CONTROLLED LUBRICATION
- EASY TO ASSEMBLE AND INSTALL
- COMPACT DESIGN
- MODULAR DESIGN ALLOWS FOR CUSTOM CONFIGURATIONS
- ACCURATE, ADJUSTABLE GREASE DISTRIBUTION
- AVAILABLE IN ZINC-NIKKEL PLATED STEEL OR AISI 316

C2400PE - WK 11/25

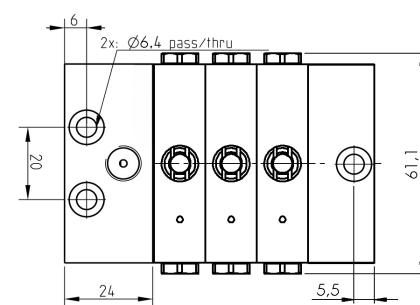
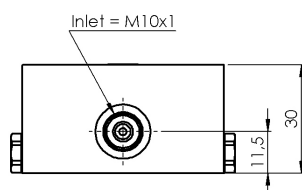
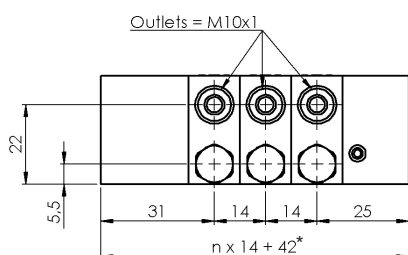
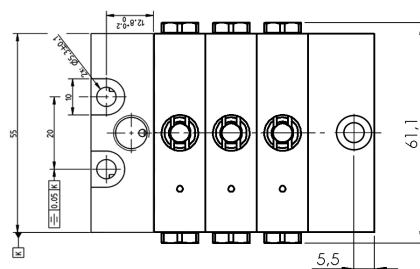
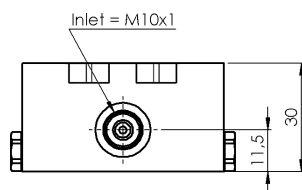
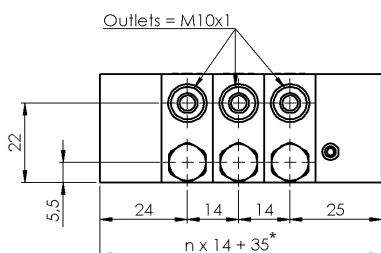
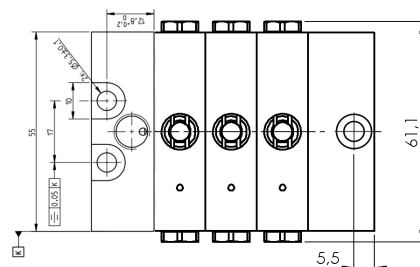
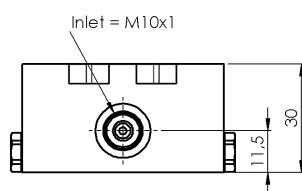
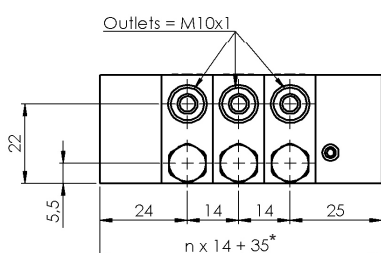
# MPZ

## TECHNICAL INFORMATION

### GENERAL INFORMATION

|                                   |   |
|-----------------------------------|---|
| <b>Single outlet flow rate</b>    | 0,025 cm <sup>3</sup> - 0,045 cm <sup>3</sup> - 0,075 cm <sup>3</sup> - 0,105 cm <sup>3</sup> - 0,150 cm <sup>3</sup> - 0,200 cm <sup>3</sup> |
| <b>Number of divider elements</b> | 3 ÷ 12  |
| <b>Operating pressure</b>         | 15 bar (218 psi) ÷ 300 bar (4350 psi)   |
| <b>Operating temperature</b>      | -20°C ÷ +80°C   |
| <b>Material</b>                   | Zinc-Nickel plated steel - resistance in salt spray >720h   |
| <b>Strokes per minute</b>         | maximum 200   |
| <b>Inlet threaded connection</b>  | M10x1 double cone seat for Ø 4mm and 6 mm tube  |
| <b>Outlet threaded connection</b> | M10x1 double cone seat for Ø 4mm and 6 mm tube  |
| <b>Lubricants</b>                 | Min. oil 32 cSt; max. grease 2 NLGI2  |

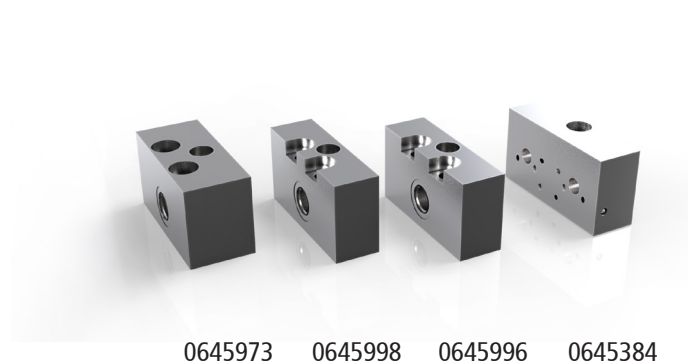
### DIMENSIONS



\* n = number of intermediate elements

## INLET AND END ELEMENTS

The NPZ starting element is available in two variants. Both inlet elements are equipped with a G1/8 grease nipple connection, making manual lubrication easy. In addition to the standard inlet element, a small variant is also available. This narrow starting element has countersunk slot holes, making it ideal for installations where space is limited.

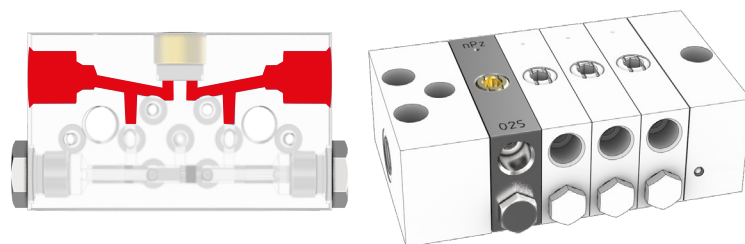


| INLET AND END ELEMENTS                 |             |
|--|-------------|
| TYPE                                   | PART NUMBER |
| Inlet zerk fitting, 20 mm, M10x1       | 0645973     |
| Inlet zerk fitting small, 20 mm, M10x1 | 0645996     |
| Inlet zerk fitting small, 17 mm, M10x1 | 0645998     |
| End element                            | 0645384     |

## INTERMEDIATE ELEMENTS

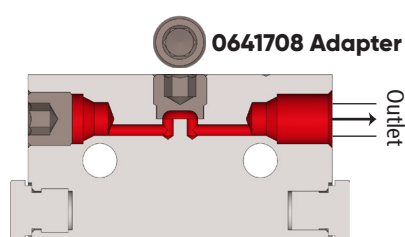
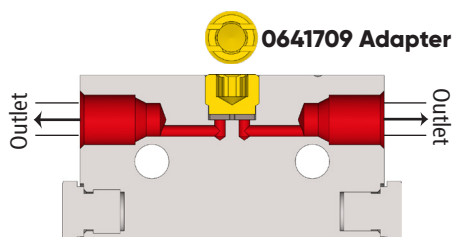
The NPZ metering elements are responsible for distributing the grease to the desired ratios. The variable dosages of the metering elements make it possible to provide each lubrication point with the right amount of grease.

| INTERMEDIATE ELEMENTS   |             |
|-------------------------|-------------|
| FLOW<br>cm <sup>3</sup> | PART NUMBER |
| 0,025                   | 0645350     |
| 0,045                   | 0645351     |
| 0,075                   | 0645352     |
| 0,105                   | 0645353     |
| 0,150                   | 0645388     |
| 0,200                   | 0645387     |



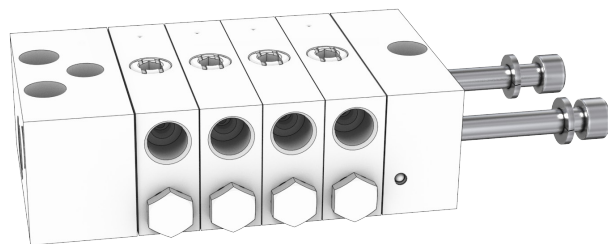
## CONVERSION WITH A SINGLE OR DOUBLE OUTLET

By replacing the yellow highlighted adapter (code 0641709) together with the stop disc (code 0641791) with the gray adapter (code 0641708), you can combine the flow volume of the outputs of the same element, as shown in the drawing. When the two outputs are combined, remember to close off the one that is not being used with a plug (code 3232153).



## ASSEMBLY OF THE DIVIDER

| TIE RODS *You need two parts per divider |             |
|--|-------------|
| NO. OF ELEMENTS                          | PART NUMBER |
| 3 elements                               | 0014333     |
| 4 elements                               | 0014329     |
| 5 elements                               | 0014303     |
| 6 elements                               | 0014330     |
| 7 elements                               | 0014305     |
| 8 elements                               | 0014306     |
| 9 elements                               | 0014331     |
| 10 elements                              | 0014308     |
| 11 elements                              | 0014332     |
| 12 elements                              | 0014310     |
| ø6 spring lock washer                    | 0016050     |



## CONNECTING THE GREASE LINES

| TERMINAL FITTING       |             |
|------------------------|-------------|
| DESCRIPTION            | PART NUMBER |
| Union screw 4 mm M10x1 | 0092822     |
| Ø4 mm olive (150 bar)  | 0093004     |
| Union screw 6 mm M10x1 | 0092823     |
| Ø6 mm olive (150 bar)  | 0093006     |

